

Name: \_\_\_\_\_ Datum: \_\_\_\_\_ Klasse 2



Englishtest: seasons, week, months, date

1 Complete the days of the week.

Monday		Wednesday	Thursday		Saturday	
--------	--	-----------	----------	--	----------	--

/3P

2 Can you tell the English date?

today: \_\_\_\_\_

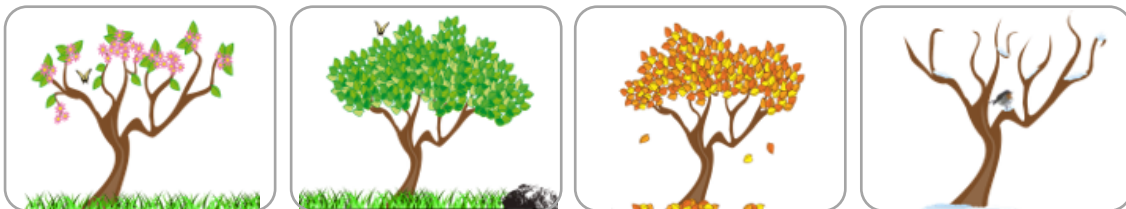
Christmas Eve (German date 24.12) \_\_\_\_\_

New Year's Eve (German date 31.12) \_\_\_\_\_

your birthday : \_\_\_\_\_

/4P

3 Fill in the correct seasons.



\_\_\_\_\_

/4P

4 Cross out the word that doesn't fit.

Monday	April	Wednesday	Thursday	Saturday
winter	autumn	spring	month	summer
Tuesday	July	October	January	March

/3P

5 Fill in the months of the year.

1.	J	a	n					
2.							r	y
3.	M							
4.		p	r					
5.								
6.				e				
7.	J	u						
8.			g			t		
9.		e	p					
10.							r	
11.	N	o						
12.			c					

/12P

6 Find the right answer. Use the words in the box.

days      year      month      seasons      February

1. A \_\_\_\_\_ has got 12 months.
2. The last \_\_\_\_\_ in the year is December.
3. There are seven \_\_\_\_\_ in a week.
4. A year has got four \_\_\_\_\_.
5. \_\_\_\_\_ has got 28 days.

/5P

7 Translate. (Übersetze)

Wann ist dein Geburtstag? \_\_\_\_\_

/1P

\_\_\_\_\_ von 32 Punkten.

Unterschrift:

Name: \_\_\_\_\_ Datum: \_\_\_\_\_ Klasse 2



## Lösung Test: seasons, week, months, date

1 Complete the days of the week.

Monday

Tuesday

Wednesday

Thursday

Friday

Saturday

Sunday

3/3P

2 Can you tell the English date?

today: (aktuelles Datum) e.g. It's the 10<sup>th</sup> of November.

Christmas Eve (German date 24.12) It's the 24<sup>th</sup> of December.

New Year's Eve (German date 31.12) It's the 31<sup>st</sup> of December.

your birthday : (eigener Geburtstag) e.g. It's the 20<sup>th</sup> of June.

4/4P

3 Fill in the correct seasons.



spring



summer



autumn



winter

4/4P

4 Cross out the word that doesn't fit.

Monday

April

Wednesday

Thursday

Saturday

winter

autumn

spring

month

summer

Tuesday

July

October

January

March

3/3P

5 Fill in the months of the year.

1.	J	a	n	u	a	r	y		
2.	F	e	b	r	u	a	r	y	
3.	M	a	r	c	h				
4.	A	p	r	i	l				
5.	M	a	y						
6.	J	u	n	e					
7.	J	u	l	y					
8.	A	u	g	u	s	t			
9.	S	e	p	t	e	m	b	e	r
10.	O	c	t	o	b	e	r		
11.	N	o	v	e	m	b	e	r	
12.	D	e	c	e	m	b	e	r	

12/12P

6 Find the right answer. Use the words in the box.

days      year      month      seasons      February

1. A **year** has got 12 months.
2. The last **month** in the year is December.
3. There are seven **days** in a week.
4. A year has got four **seasons**.
5. **February** has got 28 days.

5/5P

7 Translate. (Übersetze)

Wann ist dein Geburtstag? **When is your birthday?**

1/1P

32 von 32 Punkten.

Unterschrift: