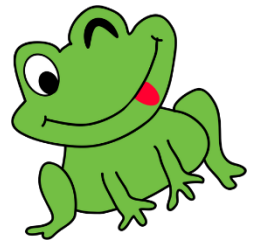


**Gemischte Aufgaben, Zahlenraum bis 20**  
(+/-/mal/durch)



**1. Aufgabe**

Rechne die Aufgaben!

+ 4 →		+ 6 →		+ 4 →		- 5 →		- 4 →					
11				20			15		20				13
13				10			19		15			15	
15			12				17		18				16
12			11				20		16			19	
16				19			18		17				12

**2. Aufgabe**

Rechne!

$2 + 7 = \underline{\quad}$        $14 + 5 = \underline{\quad}$        $6 + 5 = \underline{\quad}$        $7 + 9 = \underline{\quad}$   
 $9 - 6 = \underline{\quad}$        $18 - 4 = \underline{\quad}$        $14 - 8 = \underline{\quad}$        $12 - 9 = \underline{\quad}$

**3. Aufgabe**

Platzhalteraufgaben. Fülle die Lücken!

$\underline{\quad} - 5 = 4$        $\underline{\quad} - 3 = 9$        $19 - \underline{\quad} = 8$        $3 + \underline{\quad} = 11$   
 $\underline{\quad} + 7 = 9$        $\underline{\quad} + 3 = 14$        $11 + \underline{\quad} = 17$        $15 - \underline{\quad} = 8$

**4. Aufgabe**

Fülle die Lücken!

Hälfte	•				2	5			0
Zahl	•	6	2	8					
Doppelte	••						16	12	



## 5. Aufgabe

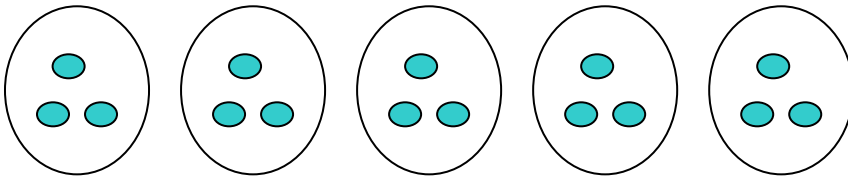
Ergänze die Tabellen!

$+ 7$	$- 9$	$+ 12$	$- 14$																																																								
<table border="1"><tr><td>2</td><td></td></tr><tr><td>4</td><td></td></tr><tr><td>11</td><td></td></tr><tr><td></td><td>8</td></tr><tr><td>8</td><td></td></tr><tr><td></td><td>12</td></tr><tr><td></td><td>19</td></tr></table>	2		4		11			8	8			12		19	<table border="1"><tr><td>10</td><td></td></tr><tr><td>18</td><td></td></tr><tr><td>11</td><td></td></tr><tr><td></td><td>8</td></tr><tr><td>13</td><td></td></tr><tr><td></td><td>6</td></tr><tr><td></td><td>11</td></tr></table>	10		18		11			8	13			6		11	<table border="1"><tr><td>7</td><td></td></tr><tr><td>5</td><td></td></tr><tr><td>2</td><td></td></tr><tr><td></td><td>18</td></tr><tr><td>8</td><td></td></tr><tr><td></td><td>12</td></tr><tr><td></td><td>16</td></tr></table>	7		5		2			18	8			12		16	<table border="1"><tr><td>20</td><td></td></tr><tr><td>16</td><td></td></tr><tr><td>19</td><td></td></tr><tr><td></td><td>4</td></tr><tr><td>17</td><td></td></tr><tr><td></td><td>0</td></tr><tr><td></td><td>1</td></tr></table>	20		16		19			4	17			0		1
2																																																											
4																																																											
11																																																											
	8																																																										
8																																																											
	12																																																										
	19																																																										
10																																																											
18																																																											
11																																																											
	8																																																										
13																																																											
	6																																																										
	11																																																										
7																																																											
5																																																											
2																																																											
	18																																																										
8																																																											
	12																																																										
	16																																																										
20																																																											
16																																																											
19																																																											
	4																																																										
17																																																											
	0																																																										
	1																																																										



## 6. Aufgabe

Schreibe die Plus und die Malaufgabe auf!

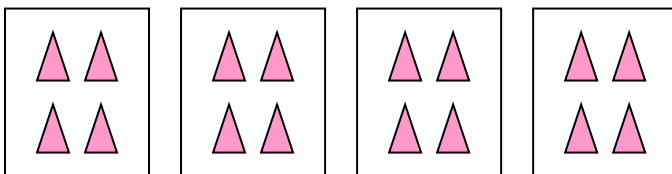


Plusaufgabe: \_\_\_\_\_

Malaufgabe: \_\_\_\_\_

## 7. Aufgabe

Schreibe nur die Malaufgabe auf!



Malaufgabe: \_\_\_\_\_



## 8. Aufgabe:

Was ist das Doppelte von 8 ? \_\_\_\_\_

Was ist die Hälfte von 20 ? \_\_\_\_\_

### 9. Aufgabe:

Vergleiche – setze ein  $<$ ,  $=$ ,  $>$  !

$6 + 7 \bigcirc 12$

$13 - 6 \bigcirc 8$

$20 - 5 \bigcirc 19 - 4$

$4 + 6 \bigcirc 10$

$16 - 8 \bigcirc 7$

$14 + 3 \bigcirc 12 - 4$

### 10. Aufgabe:

Verdoppeln und Halbieren. Verbinde!

3    8    4    2    10    6

16    6    8    20    12    4

Rechne!

$7 + 7 = \underline{\quad}$

$10 - 5 = \underline{\quad}$

$3 + 3 = \underline{\quad}$

$18 - 9 = \underline{\quad}$

$8 + 8 = \underline{\quad}$

$12 - 6 = \underline{\quad}$

$4 + 4 = \underline{\quad}$

$20 - 10 = \underline{\quad}$

### 11. Aufgabe:

Verdoppeln!

**Kartoffelsalat für 5 Personen:**

- 8 Kartoffeln
- 6 Esslöffel Mayonaise
- 4 Esslöffel Joghurt
- 1 Teelöffel Salz
- 3 saure Gurken
- 2 kleine Zwiebeln
- 1 Prise Zucker
- 5 Teelöffel gehackte Petersilie

**Kartoffelsalat für 10 Personen:**

- Kartoffeln
- Esslöffel Mayonaise
- Esslöffel Joghurt
- Teelöffel Salz
- saure Gurken
- kleine Zwiebeln
- Prise Zucker
- Teelöffel gehackte Petersilie



## 12. Aufgabe: Zehnerübergang

$$7 + 6 = 13$$

$$7 + \underline{\quad} = 10$$

$$10 + 3 = 13$$

$$6 + 8 = \underline{\quad}$$

$$6 + \underline{\quad} = 10$$

$$10 + \underline{\quad} = \underline{\quad}$$

$$5 + 7 = \underline{\quad}$$

$$5 + \underline{\quad} = 10$$

$$10 + \underline{\quad} = \underline{\quad}$$

$$6 + 8 = \underline{\quad}$$

$$6 + \underline{\quad} = 10$$

$$10 + \underline{\quad} = \underline{\quad}$$

$$8 + 5 = \underline{\quad}$$

$$8 + \underline{\quad} = 10$$

$$10 + \underline{\quad} = \underline{\quad}$$

$$7 + 7 = \underline{\quad}$$

$$7 + \underline{\quad} = 10$$

$$10 + \underline{\quad} = \underline{\quad}$$

$$9 + 9 = \underline{\quad}$$

$$9 + \underline{\quad} = 10$$

$$10 + \underline{\quad} = \underline{\quad}$$

$$4 + 6 = \underline{\quad}$$

$$4 + \underline{\quad} = 10$$

$$10 + \underline{\quad} = \underline{\quad}$$

$$9 + 4 = \underline{\quad}$$

$$9 + \underline{\quad} = 10$$

$$10 + \underline{\quad} = \underline{\quad}$$

$$6 + 6 = \underline{\quad}$$

$$6 + \underline{\quad} = 10$$

$$10 + \underline{\quad} = \underline{\quad}$$

$$9 + 8 = \underline{\quad}$$

$$9 + \underline{\quad} = 10$$

$$10 + \underline{\quad} = \underline{\quad}$$

$$3 + 9 = \underline{\quad}$$

$$3 + \underline{\quad} = 10$$

$$10 + \underline{\quad} = \underline{\quad}$$

$$8 + 8 = \underline{\quad}$$

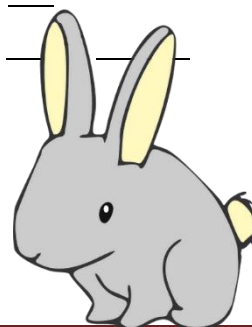
$$8 + \underline{\quad} = 10$$

$$10 + \underline{\quad} = \underline{\quad}$$

$$6 + 6 = \underline{\quad}$$

$$6 + \underline{\quad} = 10$$

$$10 + \underline{\quad} = \underline{\quad}$$



**13. Aufgabe:** Zehnerübergang

$13 - 7 = 6$

$13 - 3 = 10$

$10 - 4 = 6$

$12 - 4 = \underline{\quad}$

$12 - \underline{\quad} = 10$

$10 - \underline{\quad} = \underline{\quad}$

$11 - 4 = \underline{\quad}$

$11 - \underline{\quad} = 10$

$10 - \underline{\quad} = \underline{\quad}$

$13 - 5 = \underline{\quad}$

$13 - \underline{\quad} = 10$

$10 - \underline{\quad} = \underline{\quad}$

$11 - 7 = \underline{\quad}$

$11 - \underline{\quad} = 10$

$10 - \underline{\quad} = \underline{\quad}$

$15 - 8 = \underline{\quad}$

$15 - \underline{\quad} = 10$

$10 - \underline{\quad} = \underline{\quad}$

$12 - 8 = \underline{\quad}$

$12 - \underline{\quad} = 10$

$10 - \underline{\quad} = \underline{\quad}$

$15 - 9 = \underline{\quad}$

$15 - \underline{\quad} = 10$

$10 - \underline{\quad} = \underline{\quad}$

$17 - 8 = \underline{\quad}$

$17 - \underline{\quad} = 10$

$10 - \underline{\quad} = \underline{\quad}$

$14 - 6 = \underline{\quad}$

$14 - \underline{\quad} = 10$

$10 - \underline{\quad} = \underline{\quad}$

$16 - 8 = \underline{\quad}$

$16 - \underline{\quad} = 10$

$10 - \underline{\quad} = \underline{\quad}$

$13 - 8 = \underline{\quad}$

$13 - \underline{\quad} = 10$

$10 - \underline{\quad} = \underline{\quad}$

$14 - 8 = \underline{\quad}$

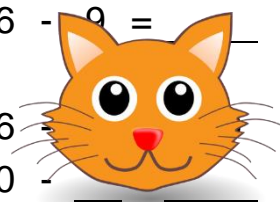
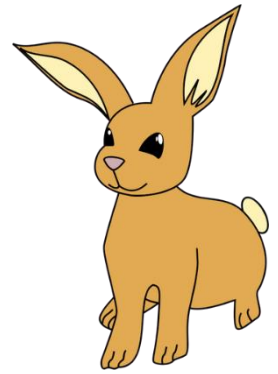
$14 - \underline{\quad} = 10$

$10 - \underline{\quad} = \underline{\quad}$

$16 - 9 = \underline{\quad}$

$16 - \underline{\quad} = 10$

$10 - \underline{\quad} = \underline{\quad}$



## 14. Aufgabe: Wer ist besonders fleißig?

16 - 14 =
5 - 2 =
9 - 4 =
17 - 9 =
12 - 9 =
7 - 5 =
13 - 2 =
18 - 2 =
8 - 4 =
14 - 6 =
10 - 3 =
20 - 3 =
4 - 4 =
3 - 2 =
19 - 18 =
17 - 1 =
20 - 17 =
16 - 3 =
13 - 13 =
1 - 1 =
6 - 4 =
18 - 4 =
19 - 14 =
20 - 2 =
11 - 3 =
12 - 4 =
6 - 1 =
4 - 2 =
13 - 7 =
9 - 7 =
6 - 2 =
17 - 6 =
12 - 12 =
6 - 5 =
18 - 1 =

20 - 4 =
17 - 13 =
6 - 3 =
12 - 7 =
14 - 10 =
11 - 6 =
9 - 2 =
19 - 11 =
15 - 3 =
2 - 2 =
9 - 3 =
18 - 3 =
5 - 4 =
10 - 4 =
16 - 13 =
18 - 6 =
15 - 5 =
17 - 10 =
13 - 4 =
12 - 2 =
8 - 6 =
18 - 18 =
20 - 12 =
9 - 8 =
16 - 8 =
17 - 15 =
15 - 10 =
16 - 1 =
13 - 11 =
11 - 10 =
20 - 19 =
10 - 8 =
14 - 7 =
18 - 5 =
17 - 4 =

15 - 13 =
13 - 12 =
5 - 3 =
19 - 1 =
11 - 9 =
17 - 2 =
8 - 2 =
19 - 17 =
18 - 12 =
13 - 9 =
14 - 9 =
11 - 5 =
20 - 16 =
3 - 3 =
16 - 9 =
17 - 8 =
2 - 1 =
15 - 12 =
19 - 10 =
9 - 1 =
10 - 2 =
8 - 7 =
7 - 4 =
18 - 7 =
20 - 6 =
12 - 10 =
14 - 3 =
19 - 9 =
9 - 9 =
10 - 7 =
16 - 12 =
15 - 2 =
17 - 5 =
13 - 1 =
20 - 20 =



Noch nicht genug?

14 - 13 =
7 - 1 =
4 - 3 =
20 - 8 =
19 - 16 =
12 - 6 =
9 - 6 =
8 - 3 =
14 - 2 =
15 - 1 =
7 - 3 =
17 - 14 =
5 - 1 =
18 - 17 =
15 - 11 =
19 - 5 =
20 - 5 =
18 - 16 =
14 - 5 =
8 - 1 =
18 - 14 =
7 - 7 =
16 - 11 =
13 - 5 =
11 - 2 =
10 - 1 =
3 - 1 =
7 - 2 =
15 - 15 =
12 - 3 =
18 - 11 =
19 - 13 =
5 - 5 =
4 - 1 =
20 - 15 =

14 - 12 =
16 - 5 =
18 - 8 =
13 - 6 =
12 - 8 =
17 - 17 =
15 - 14 =
19 - 15 =
16 - 10 =
11 - 7 =
20 - 11 =
10 - 10 =
19 - 2 =
19 - 3 =
20 - 14 =
17 - 12 =
18 - 10 =
7 - 6 =
19 - 6 =
15 - 8 =
20 - 7 =
14 - 11 =
16 - 6 =
11 - 4 =
14 - 14 =
18 - 9 =
17 - 11 =
20 - 10 =
13 - 8 =
18 - 13 =
12 - 5 =
16 - 16 =
10 - 9 =
13 - 10 =
16 - 15 =

11 - 11 =
19 - 8 =
10 - 6 =
19 - 19 =
15 - 9 =
16 - 7 =
20 - 9 =
8 - 5 =
9 - 5 =
19 - 12 =
15 - 4 =
11 - 8 =
12 - 1 =
15 - 7 =
16 - 4 =
17 - 16 =
11 - 1 =
15 - 6 =
20 - 18 =
10 - 5 =
19 - 7 =
14 - 1 =
17 - 7 =
20 - 13 =
12 - 11 =
20 - 1 =
16 - 2 =
13 - 3 =
14 - 8 =
6 - 6 =
18 - 15 =
14 - 4 =
17 - 3 =
8 - 8 =
19 - 4 =

### 15. Rechenrätsel.

Rechne alle Aufgaben und trage die passenden Lösungsbuchstaben ein.  
Wie heißt das Lösungswort?

7 + 7	=	_____
5 + 6	=	_____
18 - 9	=	_____
12 + 2	=	_____

14 = E
10 = B  
8 = N  
19 = H
11 = I  
9 = S
12 = A

7 - 4	=	_____
18 - 8	=	_____
6 + 6	=	_____
8 + 11	=	_____
8 - 5	=	_____

## Lösung:

### 1. Aufgabe

+ 4 →				+ 6 →				+ 4 →				- 5 →		- 4 →	
11	15		14	20		11	15		20	15		17	13		
13	17		4	10		15	19		15	10		15	11		
15	19		12	18		13	17		18	13		20	16		
12	16		11	17		16	20		16	11		19	15		
16	20		13	19		14	18		17	12		16	12		

### 2. Aufgabe

$2 + 7 = \underline{9}$

$9 - 6 = \underline{3}$

$14 + 5 = \underline{19}$

$18 - 4 = \underline{14}$

$6 + 5 = \underline{11}$

$14 - 8 = \underline{6}$

$7 + 9 = \underline{16}$

$12 - 9 = \underline{3}$

### 3. Aufgabe

Platzhalteraufgaben. Fülle die Lücken!

$\underline{9} - 5 = 4$

$\underline{2} + 7 = 9$

$\underline{12} - 3 = 9$

$\underline{11} + 3 = 14$

$19 - \underline{11} = 8$

$11 + \underline{6} = 17$

$3 + \underline{8} = 11$

$15 - \underline{7} = 8$

### 4. Aufgabe

Fülle die Lücken!									
Hälfte	•	3	1	4	2	5	4	3	0
Zahl	•	6	2	8	4	10	8	6	0
Doppelte	••	12	4	16	8	20	16	12	0

### 5. Aufgabe

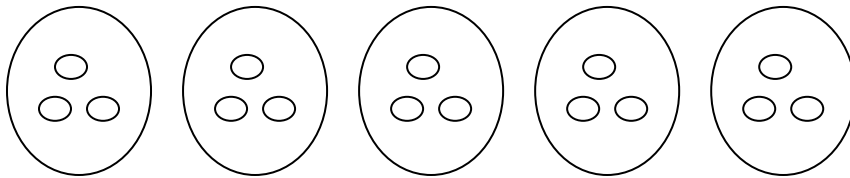
Ergänze die Tabellen!

+ 7 →		- 9 →		+ 12 →		- 14 →	
2	9	10	1	7	19	20	6
4	11	18	9	5	17	16	2
11	18	11	2	2	14	19	5
1	8	17	8	6	18	18	4
8	15	13	4	8	20	17	3
5	12	15	6	0	12	14	0
12	19	20	11	4	16	15	1



## 6. Aufgabe

Schreibe die Plus und die Malaufgabe auf!

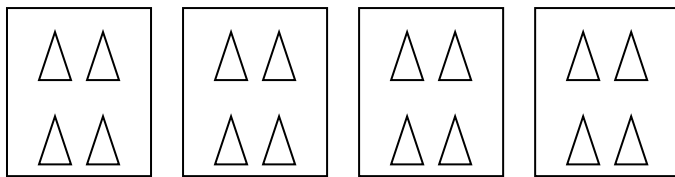


Plusaufgabe:  $3 + 3 + 3 + 3 + 3 = 15$

Malaufgabe:  $5 \bullet 3 = 15$

## 7. Aufgabe

Schreibe nur die Malaufgabe auf!



Malaufgabe:  $4 \bullet 4 = 16$

## 8. Aufgabe:

Was ist das Doppelte von 8 ? 16

Was ist die Hälfte von 20 ? 10

## 9. Aufgabe:

Vergleiche – setze ein  $<$ ,  $=$ ,  $>$  !

$6 + 7$   $>$   $12$

$13 - 6$   $<$   $8$

$20 - 5$   $=$   $19 - 4$

$4 + 6$   $=$   $10$

$16 - 8$   $>$   $7$

$14 + 3$   $>$   $12 - 4$

## 10. Aufgabe:

Verdoppeln und Halbieren:

Verbinde!

3    8    4    2    10    6



16    6    8    20    12    4

Rechne!

$7 + 7 = 14$

$10 - 5 = 5$

$3 + 3 = 6$

$18 - 9 = 9$

$8 + 8 = 16$

$12 - 6 = 6$

$4 + 4 = 8$

$20 - 10 = 10$

## 11. Aufgabe:

Ergänze!

### Kartoffelsalat für 5 Personen:

8	Kartoffeln
6	Esslöffel Mayonaise
4	Esslöffel Joghurt
1	Teelöffel Salz
3	saure Gurken
2	kleine Zwiebeln
1	Prise Zucker
5	Teelöffel gehackte Petersilie

### Kartoffelsalat für 10 Personen:

16	Kartoffeln
12	Esslöffel Mayonaise
8	Esslöffel Joghurt
2	Teelöffel Salz
6	saure Gurken
4	kleine Zwiebeln
2	Prise Zucker
10	Teelöffel gehackte Petersilie

## 12. Aufgabe:

$$7 + 6 = 13$$

$$7 + 3 = 10$$

$$10 + 3 = 13$$

$$6 + 8 = 14$$

$$6 + 4 = 10$$

$$10 + 4 = 14$$

$$5 + 7 = 12$$

$$5 + 5 = 10$$

$$10 + 2 = 12$$

$$6 + 8 = 14$$

$$6 + 4 = 10$$

$$10 + 4 = 14$$

$$8 + 5 = 13$$

$$8 + 2 = 10$$

$$10 + 3 = 13$$

$$7 + 7 = 14$$

$$7 + 3 = 10$$

$$10 + 4 = 14$$

$$9 + 9 = 18$$

$$9 + 1 = 10$$

$$10 + 8 = 18$$

$$4 + 6 = 10$$

$$4 + 6 = 10$$

$$10 + 0 = 10$$

$$9 + 4 = 13$$

$$9 + 1 = 10$$

$$10 + 3 = 13$$

$$6 + 6 = 12$$

$$6 + 4 = 10$$

$$10 + 2 = 12$$

$$9 + 8 = 17$$

$$9 + 1 = 10$$

$$10 + 7 = 17$$

$$3 + 9 = 12$$

$$3 + 7 = 10$$

$$10 + 2 = 12$$

$$8 + 8 = 16$$

$$8 + 2 = 10$$

$$10 + 6 = 16$$

$$6 + 6 = 12$$

$$6 + 4 = 10$$

$$10 + 2 = 12$$

### 13. Aufgabe:

$13 - 7 = 6$

$15 - 9 = 6$

$13 - 3 = 10$

$15 - 5 = 10$

$10 - 4 = 6$

$10 - 4 = 6$

$12 - 4 = 8$

$17 - 8 = 9$

$12 - 2 = 10$

$17 - 7 = 10$

$10 - 2 = 8$

$10 - 1 = 9$

$11 - 4 = 7$

$14 - 6 = 8$

$11 - 1 = 10$

$14 - 4 = 10$

$10 - 3 = 7$

$10 - 2 = 8$

$13 - 5 = 8$

$16 - 8 = 8$

$13 - 3 = 10$

$16 - 6 = 10$

$10 - 2 = 8$

$10 - 2 = 8$

$11 - 7 = 4$

$13 - 8 = 5$

$11 - 1 = 10$

$13 - 3 = 10$

$10 - 6 = 4$

$10 - 5 = 5$

$15 - 8 = 7$

$14 - 8 = 6$

$15 - 5 = 10$

$14 - 4 = 10$

$10 - 3 = 7$

$10 - 4 = 6$

$12 - 8 = 4$

$16 - 9 = 7$

$12 - 2 = 10$

$16 - 6 = 10$

$10 - 6 = 4$

$10 - 3 = 7$

## 14. Aufgabe: Wer ist besonders fleißig?

16	-	14	=	2
5	-	2	=	3
9	-	4	=	5
17	-	9	=	8
12	-	9	=	3
7	-	5	=	2
13	-	2	=	11
18	-	2	=	16
8	-	4	=	4
14	-	6	=	8
10	-	3	=	7
20	-	3	=	17
4	-	4	=	0
3	-	2	=	1
19	-	18	=	1
17	-	1	=	16
20	-	17	=	3
16	-	3	=	13
13	-	13	=	0
1	-	1	=	0
6	-	4	=	2
18	-	4	=	14
19	-	14	=	5
20	-	2	=	18
11	-	3	=	8
12	-	4	=	8
6	-	1	=	5
4	-	2	=	2
13	-	7	=	6
9	-	7	=	2
6	-	2	=	4
17	-	6	=	11
12	-	12	=	0
6	-	5	=	1
18	-	1	=	17

20	-	4	=	16
17	-	13	=	4
6	-	3	=	3
12	-	7	=	5
14	-	10	=	4
11	-	6	=	5
9	-	2	=	7
19	-	11	=	8
15	-	3	=	12
2	-	2	=	0
9	-	3	=	6
18	-	3	=	15
5	-	4	=	1
10	-	4	=	6
16	-	13	=	3
18	-	6	=	12
15	-	5	=	10
17	-	10	=	7
13	-	4	=	9
12	-	2	=	10
8	-	6	=	2
18	-	18	=	0
20	-	12	=	8
9	-	8	=	1
16	-	8	=	8
17	-	15	=	2
15	-	10	=	5
16	-	1	=	15
13	-	11	=	2
11	-	10	=	1
20	-	19	=	1
10	-	8	=	2
14	-	7	=	7
18	-	5	=	13
17	-	4	=	13

15	-	13	=	2
13	-	12	=	1
5	-	3	=	2
19	-	1	=	18
11	-	9	=	2
17	-	2	=	15
8	-	2	=	6
19	-	17	=	2
18	-	12	=	6
13	-	9	=	4
14	-	9	=	5
11	-	5	=	6
20	-	16	=	4
3	-	3	=	0
16	-	9	=	7
17	-	8	=	9
2	-	1	=	1
15	-	12	=	3
19	-	10	=	9
9	-	1	=	8
10	-	2	=	8
8	-	7	=	1
7	-	4	=	3
18	-	7	=	11
20	-	6	=	14
12	-	10	=	2
14	-	3	=	11
19	-	9	=	10
9	-	9	=	0
10	-	7	=	3
16	-	12	=	4
15	-	2	=	13
17	-	5	=	12
13	-	1	=	12
20	-	20	=	0

14	-	13	=	1
7	-	1	=	6
4	-	3	=	1
20	-	8	=	12
19	-	16	=	3
12	-	6	=	6
9	-	6	=	3

14	-	12	=	2
16	-	5	=	11
18	-	8	=	10
13	-	6	=	7
12	-	8	=	4
17	-	17	=	0
15	-	14	=	1

11	-	11	=	0
19	-	8	=	11
10	-	6	=	4
19	-	19	=	0
15	-	9	=	6
16	-	7	=	9
20	-	9	=	11

8 - 3 = 5
14 - 2 = 12
15 - 1 = 14
7 - 3 = 4
17 - 14 = 3
5 - 1 = 4
18 - 17 = 1
15 - 11 = 4
19 - 5 = 14
20 - 5 = 15
18 - 16 = 2
14 - 5 = 9
8 - 1 = 7
18 - 14 = 4
7 - 7 = 0
16 - 11 = 5
13 - 5 = 8
11 - 2 = 9
10 - 1 = 9
3 - 1 = 2
7 - 2 = 5
15 - 15 = 0
12 - 3 = 9
18 - 11 = 7
19 - 13 = 6
5 - 5 = 0
4 - 1 = 3
20 - 15 = 5

19 - 15 = 4
16 - 10 = 6
11 - 7 = 4
20 - 11 = 9
10 - 10 = 0
19 - 2 = 17
19 - 3 = 16
20 - 14 = 6
17 - 12 = 5
18 - 10 = 8
7 - 6 = 1
19 - 6 = 13
15 - 8 = 7
20 - 7 = 13
14 - 11 = 3
16 - 6 = 10
11 - 4 = 7
14 - 14 = 0
18 - 9 = 9
17 - 11 = 6
20 - 10 = 10
13 - 8 = 5
18 - 13 = 5
12 - 5 = 7
16 - 16 = 0
10 - 9 = 1
13 - 10 = 3
16 - 15 = 1

8 - 5 = 3
9 - 5 = 4
19 - 12 = 7
15 - 4 = 11
11 - 8 = 3
12 - 1 = 11
15 - 7 = 8
16 - 4 = 12
17 - 16 = 1
11 - 1 = 10
15 - 6 = 9
20 - 18 = 2
10 - 5 = 5
19 - 7 = 12
14 - 1 = 13
17 - 7 = 10
20 - 13 = 7
12 - 11 = 1
20 - 1 = 19
16 - 2 = 14
13 - 3 = 10
14 - 8 = 6
6 - 6 = 0
18 - 15 = 3
14 - 4 = 10
17 - 3 = 14
8 - 8 = 0
19 - 4 = 15

## 15. Rechenrätsel

Rechne alle Aufgaben und trage die passenden Lösungsbuchstaben ein. Wie heißt das Lösungswort?

7 + 7	=	14	E
5 + 6	=	11	I
18 - 9	=	9	S
12 + 2	=	14	E
7 - 4	=	3	N
18 - 8	=	10	B
6 + 6	=	12	A
8 + 11	=	19	H
8 - 5	=	3	N

**Lösungswort: Eisenbahn**