



1. Rechne das 1 x 1

•	1	2	3	4	5	6	7	8	9	10
1										
2										
3										
4										
5										
6										
7										
8										
9										
10										

2. Rechne und schreibe die Tauschaufgabe darunter!

3	•	4	=	
	•		=	
9	•	6	=	
	•		=	
8	•	5	=	
	•		=	

5	•	4	=	
	•		=	
4	•	2	=	
	•		=	
3	•	4	=	
	•		=	

6	•	3	=	
	•		=	
7	•	3	=	
	•		=	
9	•	9	=	
	•		=	

4	•	6	=	
	•		=	
6	•	8	=	
	•		=	
2	•	9	=	
	•		=	

3. Der Fliesenleger hat schon viele Platten angeklebt.

4 Reihen, in jeder Reihe 6 Platten: _____

7 Reihen, in jeder Reihe 8 Platten: _____

6 Reihen, in jeder Reihe 9 Platten: _____

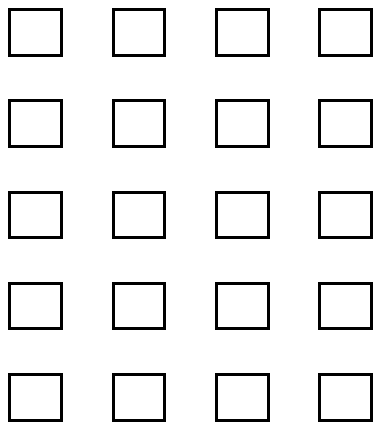
9 Reihen, in jeder Reihe 7 Platten: _____

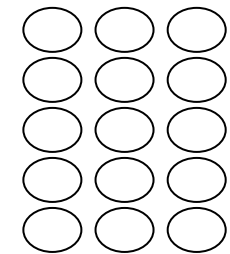
7 Reihen, in jeder Reihe 6 Platten: _____

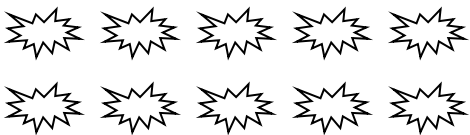
6 Reihen, in jeder Reihe 8 Platten: _____

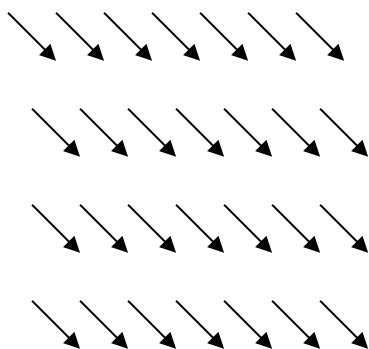


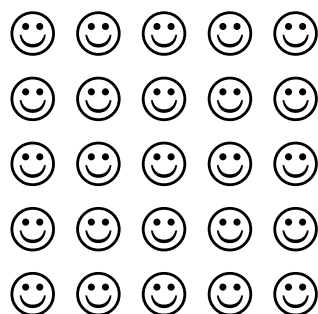
1. Rechne zu jedem Bild zwei Malaufgaben!













1. Wir üben!

2	•	1	=	
1	•	1	=	
4	•	1	=	
3	•	1	=	
6	•	1	=	
5	•	1	=	
8	•	1	=	
7	•	1	=	
10	•	1	=	
9	•	1	=	

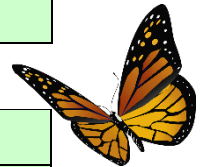
9	•	2	=	
10	•	2	=	
7	•	2	=	
8	•	2	=	
5	•	2	=	
6	•	2	=	
3	•	2	=	
8	•	2	=	
1	•	2	=	
2	•	2	=	

2	•	3	=	
1	•	3	=	
4	•	3	=	
3	•	3	=	
6	•	3	=	
5	•	3	=	
8	•	3	=	
7	•	3	=	
10	•	3	=	
9	•	3	=	

9	•	4	=	
10	•	4	=	
7	•	4	=	
8	•	4	=	
5	•	4	=	
6	•	4	=	
3	•	4	=	
8	•	4	=	
1	•	4	=	
2	•	4	=	

2	•	5	=	
1	•	5	=	
4	•	5	=	
3	•	5	=	
6	•	5	=	
5	•	5	=	
8	•	5	=	
7	•	5	=	
10	•	5	=	
9	•	5	=	

9	•	6	=	
10	•	6	=	
7	•	6	=	
8	•	6	=	
5	•	6	=	
6	•	6	=	
3	•	6	=	
8	•	6	=	
1	•	6	=	
2	•	6	=	



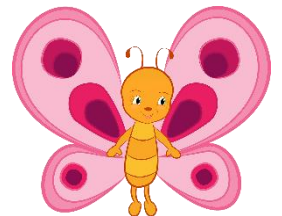
2	•	7	=	
1	•	7	=	
4	•	7	=	
3	•	7	=	
6	•	7	=	
5	•	7	=	
8	•	7	=	
7	•	7	=	
10	•	7	=	
9	•	7	=	

9	•	8	=	
10	•	8	=	
7	•	8	=	
8	•	8	=	
5	•	8	=	
6	•	8	=	
3	•	8	=	
8	•	8	=	
1	•	8	=	
2	•	8	=	

2	•	9	=	
1	•	9	=	
4	•	9	=	
3	•	9	=	
6	•	9	=	
5	•	9	=	
8	•	9	=	
7	•	9	=	
10	•	9	=	
9	•	9	=	

1. Division

18 : 6 =		denn		• 6 =	18
27 : 9 =		denn		• 9 =	27
8 : 4 =		denn		• 4 =	8
16 : 8 =		denn		• 8 =	16
45 : 9 =		denn		• 9 =	45
4 : 2 =		denn		• 2 =	4
56 : 7 =		denn		• 7 =	56
18 : 9 =		denn		• 9 =	18
36 : 4 =		denn		• 4 =	36
54 : 6 =		denn		• 6 =	54
10 : 5 =		denn		• 5 =	10
24 : 8 =		denn		• 8 =	24
28 : 7 =		denn		• 7 =	28
16 : 4 =		denn		• 4 =	16
6 : 2 =		denn		• 2 =	6
24 : 6 =		denn		• 6 =	24
63 : 9 =		denn		• 9 =	63
24 : 3 =		denn		• 3 =	24
18 : 2 =		denn		• 2 =	18
35 : 7 =		denn		• 7 =	35
35 : 5 =		denn		• 5 =	35
72 : 8 =		denn		• 8 =	72
25 : 5 =		denn		• 5 =	25
18 : 3 =		denn		• 3 =	18
81 : 9 =		denn		• 9 =	81
48 : 8 =		denn		• 8 =	48
12 : 2 =		denn		• 2 =	12
36 : 6 =		denn		• 6 =	36
24 : 4 =		denn		• 4 =	24
64 : 8 =		denn		• 8 =	64
40 : 5 =		denn		• 5 =	40
6 : 3 =		denn		• 3 =	6
54 : 6 =		denn		• 6 =	54
24 : 3 =		denn		• 3 =	24
48 : 8 =		denn		• 8 =	48



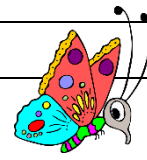


1. Wir üben!

1	•	2	=	
1	•	8	=	
1	•	7	=	
1	•	10	=	
1	•	6	=	
2	•	2	=	
2	•	6	=	
2	•	8	=	
3	•	9	=	
3	•	11	=	
3	•	4	=	
4	•	3	=	
5	•	8	=	
5	•	4	=	
6	•	7	=	
6	•	5	=	
7	•	9	=	
7	•	3	=	
7	•	6	=	
7	•	5	=	
8	•	2	=	
8	•	4	=	
9	•	5	=	
9	•	10	=	
10	•	11	=	
1	•	5	=	
8	•	11	=	
10	•	7	=	
8	•	9	=	
7	•	2	=	
2	•	5	=	

1	•	3	=	
2	•	9	=	
2	•	11	=	
3	•	10	=	
8	•	7	=	
2	•	3	=	
5	•	5	=	
5	•	2	=	
5	•	11	=	
7	•	4	=	
8	•	6	=	
4	•	10	=	
1	•	11	=	
7	•	10	=	
6	•	2	=	
10	•	3	=	
2	•	10	=	
4	•	9	=	
5	•	7	=	
9	•	8	=	
4	•	8	=	
6	•	6	=	
2	•	7	=	
10	•	5	=	
5	•	9	=	
9	•	7	=	
3	•	2	=	
9	•	11	=	
5	•	10	=	
9	•	4	=	
8	•	8	=	

1	•	4	=	
3	•	7	=	
8	•	10	=	
5	•	3	=	
6	•	11	=	
2	•	4	=	
4	•	2	=	
7	•	8	=	
4	•	5	=	
8	•	5	=	
7	•	7	=	
6	•	9	=	
3	•	6	=	
8	•	3	=	
4	•	7	=	
6	•	10	=	
6	•	4	=	
10	•	4	=	
1	•	9	=	
10	•	2	=	
7	•	11	=	
6	•	8	=	
5	•	6	=	
3	•	3	=	
9	•	9	=	
9	•	2	=	
10	•	10	=	
10	•	8	=	
9	•	3	=	
3	•	8	=	
3	•	5	=	

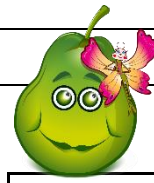


1. Wir üben!

2	:	2	
6	:	6	
6	:	2	
7	:	7	
9	:	3	
10	:	5	
11	:	11	
14	:	2	
15	:	5	
15	:	3	
16	:	4	
18	:	9	
20	:	10	
32	:	8	
35	:	7	
36	:	9	
40	:	4	
40	:	8	
44	:	11	
48	:	6	
48	:	8	
50	:	5	
55	:	11	
72	:	9	
90	:	10	
5	:	5	
9	:	9	
28	:	4	
70	:	7	
36	:	6	
30	:	3	

3	:	3	
12	:	6	
24	:	8	
110	:	11	
72	:	8	
12	:	3	
56	:	7	
21	:	3	
18	:	6	
36	:	4	
14	:	7	
63	:	7	
90	:	9	
80	:	10	
22	:	11	
20	:	4	
16	:	2	
50	:	10	
25	:	5	
6	:	3	
10	:	2	
35	:	5	
24	:	6	
40	:	10	
81	:	9	
60	:	6	
33	:	11	
30	:	10	
40	:	5	
4	:	2	
8	:	8	

4	:	4	
42	:	6	
12	:	4	
100	:	10	
20	:	5	
54	:	9	
10	:	10	
42	:	7	
49	:	7	
24	:	3	
16	:	8	
12	:	2	
24	:	4	
80	:	8	
64	:	8	
77	:	11	
45	:	5	
45	:	9	
70	:	10	
8	:	4	
18	:	3	
88	:	11	
21	:	7	
8	:	2	
54	:	6	
30	:	5	
27	:	9	
18	:	2	
32	:	4	
56	:	8	
27	:	3	



1. Wir üben weiter!

8	•	10	=	
3	•	7	=	
7	•	10	=	
3	•	10	=	
6	•	2	=	
7	•	2	=	
5	•	3	=	
8	•	7	=	
10	•	9	=	
3	•	1	=	
4	•	1	=	
8	•	9	=	
10	•	1	=	
9	•	5	=	
4	•	10	=	
4	•	4	=	
9	•	9	=	
7	•	3	=	
6	•	5	=	
5	•	6	=	
10	•	3	=	
2	•	8	=	
5	•	8	=	
10	•	1	=	
5	•	2	=	
2	•	7	=	
5	•	6	=	
5	•	1	=	
2	•	4	=	
10	•	1	=	
2	•	9	=	

9	•	7	=	
5	•	4	=	
9	•	9	=	
5	•	1	=	
10	•	6	=	
10	•	10	=	
7	•	4	=	
8	•	5	=	
6	•	5	=	
7	•	8	=	
9	•	1	=	
9	•	3	=	
6	•	9	=	
4	•	4	=	
5	•	6	=	
4	•	5	=	
6	•	1	=	
4	•	7	=	
6	•	10	=	
10	•	10	=	
10	•	1	=	
10	•	5	=	
5	•	3	=	
10	•	1	=	
10	•	6	=	
10	•	9	=	
10	•	3	=	
2	•	6	=	
10	•	7	=	
10	•	8	=	
10	•	2	=	

7	•	8	=	
10	•	9	=	
3	•	4	=	
9	•	7	=	
9	•	2	=	
6	•	8	=	
6	•	8	=	
7	•	2	=	
3	•	7	=	
6	•	2	=	
10	•	9	=	
9	•	2	=	
7	•	10	=	
9	•	4	=	
8	•	7	=	
2	•	6	=	
3	•	9	=	
4	•	8	=	
3	•	5	=	
2	•	1	=	
2	•	7	=	
5	•	6	=	
5	•	6	=	
5	•	3	=	
5	•	1	=	
5	•	9	=	
10	•	5	=	
10	•	8	=	
5	•	3	=	
2	•	5	=	
10	•	5	=	

Lösungen Blatt 1

1. Rechne das 1 x 1

•	1	2	3	4	5	6	7	8	9	10
1	1	2	3	4	5	6	7	8	9	10
2	2	4	6	8	10	12	14	16	18	20
3	3	6	9	12	15	18	21	24	27	30
4	4	8	12	16	20	24	28	32	36	40
5	5	10	15	20	25	30	35	40	45	50
6	6	12	18	24	30	36	42	48	54	60
7	7	14	21	28	35	42	49	56	63	70
8	8	16	24	32	40	48	56	64	72	80
9	9	18	27	36	45	54	63	72	81	90
10	10	20	30	40	50	60	70	80	90	100

2. Rechne und schreibe die Tauschaufgabe darunter!

3	•	4	=	12
4	•	3	=	12
9	•	6	=	54
6	•	9	=	54
8	•	5	=	40
5	•	8	=	40

5	•	4	=	20
4	•	5	=	20
4	•	2	=	8
2	•	4	=	8
3	•	4	=	12
4	•	3	=	12

6	•	3	=	18
3	•	6	=	18
7	•	3	=	21
3	•	7	=	21
9	•	9	=	81
9	•	9	=	81

4	•	6	=	24
6	•	4	=	24
6	•	8	=	48
8	•	6	=	48
2	•	9	=	18
9	•	2	=	18

3. Der Fliesenleger hat schon viele Platten angeklebt.

4 Reihen, in jeder Reihe 6 Platten: $4 \cdot 6 = 24$

7 Reihen, in jeder Reihe 8 Platten: $7 \cdot 8 = 56$

6 Reihen, in jeder Reihe 9 Platten: $6 \cdot 9 = 54$

9 Reihen, in jeder Reihe 7 Platten: $9 \cdot 7 = 63$

7 Reihen, in jeder Reihe 6 Platten: $7 \cdot 6 = 42$

6 Reihen, in jeder Reihe 8 Platten: $6 \cdot 8 = 48$

Lösungen Blatt 2

1. Rechne zu jedem Bild zwei Malaufgaben!

$4 \cdot 5 = 20$

$5 \cdot 4 = 20$

$3 \cdot 5 = 15$

$5 \cdot 3 = 15$

$5 \cdot 2 = 10$

$2 \cdot 5 = 10$

$7 \cdot 4 = 28$

$4 \cdot 7 = 28$

$5 \cdot 5 = 25$

$5 \cdot 5 = 25$

Lösungen Blatt 3

1. Wir üben!

2	•	1	=	2
1	•	1	=	1
4	•	1	=	4
3	•	1	=	3
6	•	1	=	6
5	•	1	=	5
8	•	1	=	8
7	•	1	=	7
10	•	1	=	10
9	•	1	=	9

9	•	2	=	18
10	•	2	=	20
7	•	2	=	14
8	•	2	=	16
5	•	2	=	10
6	•	2	=	12
3	•	2	=	6
8	•	2	=	16
1	•	2	=	2
2	•	2	=	4

2	•	3	=	6
1	•	3	=	3
4	•	3	=	12
3	•	3	=	9
6	•	3	=	18
5	•	3	=	15
8	•	3	=	24
7	•	3	=	21
10	•	3	=	30
9	•	3	=	27

9	•	4	=	36
10	•	4	=	40
7	•	4	=	28
8	•	4	=	32
5	•	4	=	20
6	•	4	=	24
3	•	4	=	12
8	•	4	=	32
1	•	4	=	4
2	•	4	=	8

2	•	5	=	10
1	•	5	=	5
4	•	5	=	20
3	•	5	=	15
6	•	5	=	30
5	•	5	=	25
8	•	5	=	40
7	•	5	=	35
10	•	5	=	50
9	•	5	=	45

9	•	6	=	54
10	•	6	=	60
7	•	6	=	42
8	•	6	=	48
5	•	6	=	30
6	•	6	=	36
3	•	6	=	18
8	•	6	=	48
1	•	6	=	6
2	•	6	=	12

2	•	7	=	14
1	•	7	=	7
4	•	7	=	28
3	•	7	=	21
6	•	7	=	42
5	•	7	=	35
8	•	7	=	56
7	•	7	=	49
10	•	7	=	70
9	•	7	=	63

9	•	8	=	72
10	•	8	=	80
7	•	8	=	56
8	•	8	=	64
5	•	8	=	40
6	•	8	=	48
3	•	8	=	24
8	•	8	=	64
1	•	8	=	8
2	•	8	=	16

2	•	9	=	18
1	•	9	=	9
4	•	9	=	36
3	•	9	=	27
6	•	9	=	54
5	•	9	=	45
8	•	9	=	72
7	•	9	=	63
10	•	9	=	90
9	•	9	=	81

Lösungen Blatt 4

1. Division

18	:	6	=	3	denn	3	•	6	=	18
27	:	9	=	3	denn	3	•	9	=	27
8	:	4	=	2	denn	2	•	4	=	8
16	:	8	=	2	denn	2	•	8	=	16
45	:	9	=	5	denn	5	•	9	=	45
4	:	2	=	2	denn	2	•	2	=	4
56	:	7	=	8	denn	8	•	7	=	56
18	:	9	=	2	denn	2	•	9	=	18
36	:	4	=	9	denn	9	•	4	=	36
54	:	6	=	9	denn	9	•	6	=	54
10	:	5	=	2	denn	2	•	5	=	10
24	:	8	=	3	denn	3	•	8	=	24
28	:	7	=	4	denn	4	•	7	=	28
16	:	4	=	4	denn	4	•	4	=	16
6	:	2	=	3	denn	3	•	2	=	6
24	:	6	=	4	denn	4	•	6	=	24
63	:	9	=	7	denn	7	•	9	=	63
24	:	3	=	8	denn	8	•	3	=	24
18	:	2	=	9	denn	9	•	2	=	18
35	:	7	=	5	denn	5	•	7	=	35
35	:	5	=	7	denn	7	•	5	=	35
72	:	8	=	9	denn	9	•	8	=	72
25	:	5	=	5	denn	5	•	5	=	25
18	:	3	=	6	denn	6	•	3	=	18
81	:	9	=	9	denn	9	•	9	=	81
48	:	8	=	6	denn	6	•	8	=	48
12	:	2	=	6	denn	6	•	2	=	12
36	:	6	=	6	denn	6	•	6	=	36
24	:	4	=	6	denn	6	•	4	=	24
64	:	8	=	8	denn	8	•	8	=	64
40	:	5	=	8	denn	8	•	5	=	40
6	:	3	=	2	denn	2	•	3	=	6
54	:	6	=	9	denn	9	•	6	=	54
24	:	3	=	8	denn	8	•	3	=	24
48	:	8	=	6	denn	6	•	8	=	48

Lösung Blatt 5

1. Wir üben!

1	•	2	=	2
1	•	8	=	8
1	•	7	=	7
1	•	10	=	10
1	•	6	=	6
2	•	2	=	4
2	•	6	=	12
2	•	8	=	16
3	•	9	=	27
3	•	11	=	33
3	•	4	=	12
4	•	3	=	12
5	•	8	=	40
5	•	4	=	20
6	•	7	=	42
6	•	5	=	30
7	•	9	=	63
7	•	3	=	21
7	•	6	=	42
7	•	5	=	35
8	•	2	=	16
8	•	4	=	32
9	•	5	=	45
9	•	10	=	90
10	•	11	=	110
1	•	5	=	5
8	•	11	=	88
10	•	7	=	70
8	•	9	=	72
7	•	2	=	14
2	•	5	=	10

1	•	3	=	3
2	•	9	=	18
2	•	11	=	22
3	•	10	=	30
8	•	7	=	56
2	•	3	=	6
5	•	5	=	25
5	•	2	=	10
5	•	11	=	55
7	•	4	=	28
8	•	6	=	48
4	•	10	=	40
1	•	11	=	11
7	•	10	=	70
6	•	2	=	12
10	•	3	=	30
2	•	10	=	20
4	•	9	=	36
5	•	7	=	35
9	•	8	=	72
4	•	8	=	32
6	•	6	=	36
2	•	7	=	14
10	•	5	=	50
5	•	9	=	45
9	•	7	=	63
3	•	2	=	6
9	•	11	=	99
5	•	10	=	50
9	•	4	=	36
8	•	8	=	64

1	•	4	=	4
3	•	7	=	21
8	•	10	=	80
5	•	3	=	15
6	•	11	=	66
2	•	4	=	8
4	•	2	=	8
7	•	8	=	56
4	•	5	=	20
8	•	5	=	40
7	•	7	=	49
6	•	9	=	54
3	•	6	=	18
8	•	3	=	24
4	•	7	=	28
6	•	10	=	60
6	•	4	=	24
10	•	4	=	40
1	•	9	=	9
10	•	2	=	20
7	•	11	=	77
6	•	8	=	48
5	•	6	=	30
3	•	3	=	9
9	•	9	=	81
9	•	2	=	18
10	•	10	=	100
10	•	8	=	80
9	•	3	=	27
3	•	8	=	24
3	•	5	=	15

Lösung Blatt 6

1. Wir üben!

2	:	2	=	1
6	:	6	=	6
6	:	2	=	3
7	:	7	=	1
9	:	3	=	3
10	:	5	=	2
11	:	11	=	1
14	:	2	=	7
15	:	5	=	3
15	:	3	=	5
16	:	4	=	4
18	:	9	=	2
20	:	10	=	2
32	:	8	=	4
35	:	7	=	5
36	:	9	=	4
40	:	4	=	10
40	:	8	=	5
44	:	11	=	4
48	:	6	=	8
48	:	8	=	6
50	:	5	=	10
55	:	11	=	5
72	:	9	=	8
90	:	10	=	9
5	:	5	=	1
9	:	9	=	1
28	:	4	=	7
70	:	7	=	10
36	:	6	=	6
30	:	3	=	10

3	:	3	=	1
12	:	6	=	2
24	:	8	=	3
110	:	11	=	10
72	:	8	=	9
12	:	3	=	4
56	:	7	=	8
21	:	3	=	7
18	:	6	=	3
36	:	4	=	9
14	:	7	=	2
63	:	7	=	9
90	:	9	=	10
80	:	10	=	8
22	:	11	=	2
20	:	4	=	5
16	:	2	=	8
50	:	10	=	5
25	:	5	=	5
6	:	3	=	3
10	:	2	=	5
35	:	5	=	7
24	:	6	=	4
40	:	10	=	4
81	:	9	=	9
60	:	6	=	10
33	:	11	=	3
30	:	10	=	3
40	:	5	=	8
4	:	2	=	2
8	:	8	=	1

4	:	4	=	1
42	:	6	=	7
12	:	4	=	3
100	:	10	=	10
20	:	5	=	4
54	:	9	=	6
10	:	10	=	1
42	:	7	=	6
49	:	7	=	7
24	:	3	=	8
16	:	8	=	2
12	:	2	=	6
24	:	4	=	6
80	:	8	=	10
64	:	8	=	8
77	:	11	=	7
45	:	5	=	9
45	:	9	=	5
70	:	10	=	7
8	:	4	=	2
18	:	3	=	6
88	:	11	=	8
21	:	7	=	3
8	:	2	=	4
54	:	6	=	9
30	:	5	=	6
27	:	9	=	3
18	:	2	=	9
32	:	4	=	8
56	:	8	=	7
27	:	3	=	9

Lösung Blatt 7

1. Wir üben weiter!

8	•	10	=	80
3	•	7	=	21
7	•	10	=	70
3	•	10	=	30
6	•	2	=	12
7	•	2	=	14
5	•	3	=	15
8	•	7	=	56
10	•	9	=	90
3	•	1	=	3
4	•	1	=	4
8	•	9	=	72
10	•	1	=	10
9	•	5	=	45
4	•	10	=	40
4	•	4	=	16
9	•	9	=	81
7	•	3	=	21
6	•	5	=	30
5	•	6	=	30
10	•	3	=	30
2	•	8	=	16
5	•	8	=	40
10	•	1	=	10
5	•	2	=	10
2	•	7	=	14
5	•	6	=	30
5	•	1	=	5
2	•	4	=	8
10	•	1	=	10
2	•	9	=	18

9	•	7	=	63
5	•	4	=	20
9	•	9	=	81
5	•	1	=	5
10	•	6	=	60
10	•	10	=	100
7	•	4	=	28
8	•	5	=	40
6	•	5	=	30
7	•	8	=	56
9	•	1	=	9
9	•	3	=	27
6	•	9	=	54
4	•	4	=	16
5	•	6	=	30
4	•	5	=	20
6	•	1	=	6
4	•	7	=	28
6	•	10	=	60
10	•	10	=	100
10	•	1	=	10
10	•	5	=	50
5	•	3	=	15
10	•	1	=	10
10	•	6	=	60
10	•	9	=	90
10	•	3	=	30
2	•	6	=	12
10	•	7	=	70
10	•	8	=	80
10	•	2	=	20

7	•	8	=	56
10	•	9	=	90
3	•	4	=	12
9	•	7	=	63
9	•	2	=	18
6	•	8	=	48
6	•	8	=	48
7	•	2	=	14
3	•	7	=	21
6	•	2	=	12
10	•	9	=	90
9	•	2	=	18
7	•	10	=	70
9	•	4	=	36
8	•	7	=	56
2	•	6	=	12
3	•	9	=	27
4	•	8	=	32
3	•	5	=	15
2	•	1	=	2
2	•	7	=	14
5	•	6	=	30
5	•	6	=	30
5	•	3	=	15
5	•	1	=	5
5	•	9	=	45
10	•	5	=	50
10	•	8	=	80
5	•	3	=	15
2	•	5	=	10
10	•	5	=	50