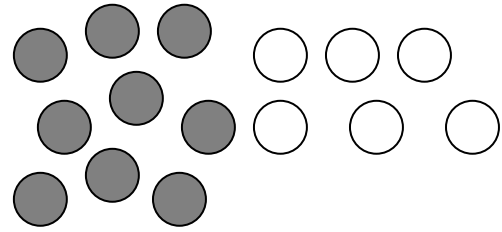
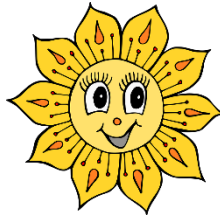
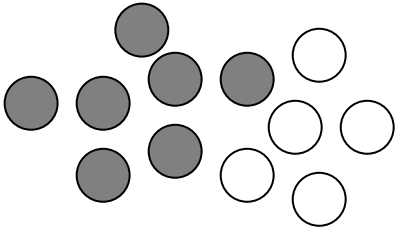


Platzhalteraufgaben - Kannst du das?

1. Finde die Tauschaufgabe und rechne!



$$\underline{\quad} + \underline{\quad} = \underline{\quad}$$

$$\underline{\quad} + \underline{\quad} = \underline{\quad}$$

$$\underline{\quad} - \underline{\quad} = \underline{\quad}$$

$$\underline{\quad} - \underline{\quad} = \underline{\quad}$$

$$\underline{\quad} + \underline{\quad} = \underline{\quad}$$

$$\underline{\quad} + \underline{\quad} = \underline{\quad}$$

$$\underline{\quad} - \underline{\quad} = \underline{\quad}$$

$$\underline{\quad} - \underline{\quad} = \underline{\quad}$$

2. Finde die richtige Tauschaufgabe und rechne!

$$13 + 3 = 16$$

$$16 - 13 = 3$$

$$9 + \underline{\quad} = 20$$

$$11 + \underline{\quad} = 17$$

$$15 + \underline{\quad} = 19$$

$$14 + \underline{\quad} = 19$$

$$12 + \underline{\quad} = 19$$

$$5 + 13 = 18$$

$$18 - 13 = 5$$

$$\underline{\quad} + 2 = 19$$

$$\underline{\quad} + 7 = 18$$

$$\underline{\quad} + 6 = 14$$

$$\underline{\quad} + 13 = 19$$

$$\underline{\quad} + 13 = 20$$

$$19 - 6 = 13$$

$$13 + 6 = 19$$

$$\underline{\quad} - 13 = 3$$

$$\underline{\quad} - 4 = 14$$

$$\underline{\quad} - 11 = 6$$

$$\underline{\quad} - 3 = 12$$

$$\underline{\quad} - 14 = 5$$

$$18 - 13 = 5$$

$$18 - 5 = 13$$

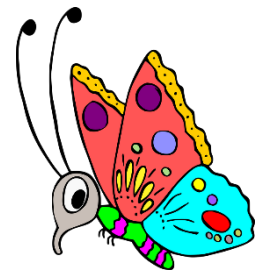
$$16 - \underline{\quad} = 12$$

$$17 - \underline{\quad} = 6$$

$$13 - \underline{\quad} = 11$$

$$19 - \underline{\quad} = 5$$

$$19 - \underline{\quad} = 15$$



1. Schreibe die verwandten Aufgaben auf und rechne!

Plusaufgabe	Minusaufgabe	Plusaufgabe	Minusaufgabe
$2 + 2 = 4$	$4 - 2 = 2$	_____	$14 - 3 = \underline{\quad}$
_____	$7 - 3 = \underline{\quad}$	$16 + 3 = \underline{\quad}$	_____
$5 + 5 = \underline{\quad}$	_____	_____	$14 - 2 = \underline{\quad}$
_____	$5 - 4 = \underline{\quad}$	_____	$17 - 3 = \underline{\quad}$
$4 + 6 = \underline{\quad}$	_____	_____	$19 - 8 = \underline{\quad}$
$1 + 5 = \underline{\quad}$	_____	_____	$20 - 10 = \underline{\quad}$
_____	$8 - 7 = \underline{\quad}$	$13 + 7 = \underline{\quad}$	_____

2. Schreibe die verwandten Aufgaben auf und rechne!

Plusaufgabe	Minusaufgabe	Plusaufgabe	Minusaufgabe
$6 + 7 = 13$	$13 - 6 = 7$	_____	$16 - 9 = 7$
_____	$15 - 11 = 4$	$9 + 9 = 18$	_____
_____	$19 - 12 = 7$	$6 + 6 = 12$	_____
$8 + 7 = 15$	_____	_____	$17 - 8 = 9$
$14 + 3 = 17$	_____	$7 + 12 = 9$	_____
$5 + 12 = 17$	_____	$14 + 5 = 19$	_____
_____	$14 - 9 = 5$	_____	$20 - 13 = 7$
_____	$12 - 4 = 8$	$11 + 4 = 15$	_____

3. Hier bleiben die verwandten Zahlen Minus!

Minusaufgabe 1	Minusaufgabe 2
$13 - 7 = 6$	$13 - 6 = 7$
$17 - 5 = 12$	_____
$12 - 8 = 4$	_____
$20 - 6 = 14$	_____
$16 - 6 = 8$	_____
$14 - 5 = 9$	_____

Warum ist das so?



1. Platzhalter-Euro - Aufgaben

$4 \text{ €} + \underline{\quad\quad\quad} = 10 \text{ €}$

$5 \text{ ct} + \underline{\quad\quad\quad} = 9 \text{ ct}$

$6 \text{ €} + \underline{\quad\quad\quad} = 8 \text{ €}$

$4 \text{ ct} + \underline{\quad\quad\quad} = 7 \text{ ct}$

$\underline{\quad\quad\quad} + 5 \text{ €} = 7 \text{ €}$

$\underline{\quad\quad\quad} + 3 \text{ ct} = 8 \text{ ct}$

$\underline{\quad\quad\quad} + 6 \text{ €} = 9 \text{ €}$

$\underline{\quad\quad\quad} + 2 \text{ ct} = 10 \text{ ct}$

$9 \text{ €} - \underline{\quad\quad\quad} = 7 \text{ €}$

$7 \text{ ct} - \underline{\quad\quad\quad} = 6 \text{ ct}$

$10 \text{ €} - \underline{\quad\quad\quad} = 3 \text{ €}$

$8 \text{ ct} - \underline{\quad\quad\quad} = 4 \text{ ct}$

$\underline{\quad\quad\quad} - 3 \text{ €} = 7 \text{ €}$

$\underline{\quad\quad\quad} - 4 \text{ ct} = 2 \text{ ct}$

$\underline{\quad\quad\quad} - 9 \text{ €} = 1 \text{ €}$

$\underline{\quad\quad\quad} - 2 \text{ ct} = 7 \text{ ct}$



2. Hier hilft dir die Tauschaufgabe:

$10 - \underline{\quad} = 9$

$9 - \underline{\quad} = 1$

$10 - \underline{\quad} = 2$

$$\begin{array}{r} - 4 \\ 10 \text{ -----} \rightarrow 6 \end{array}$$

$10 - \underline{\quad} = 8$

$9 - \underline{\quad} = 2$

$10 - \underline{\quad} = 7$

$10 - \underline{\quad} = 7$

$9 - \underline{\quad} = 3$

$10 - \underline{\quad} = 1$

$$\begin{array}{r} - \underline{\quad} \\ 10 \text{ -----} \rightarrow 3 \end{array}$$

$10 - \underline{\quad} = 6$

$9 - \underline{\quad} = 4$

$10 - \underline{\quad} = 0$

$10 - \underline{\quad} = 5$

$9 - \underline{\quad} = 5$

$10 - \underline{\quad} = 4$

$$\begin{array}{r} - \underline{\quad} \\ 10 \text{ -----} \rightarrow 1 \end{array}$$

3. Hier hilft dir die Umkehraufgabe:

$\underline{\quad} + 1 = 9$

$\underline{\quad} + 3 = 4$

$\underline{\quad} + 1 = 3$

$\underline{\quad} - 2 = 6$

$\underline{\quad} + 1 = 8$

$\underline{\quad} + 3 = 5$

$\underline{\quad} + 1 = 4$

$\underline{\quad} - 3 = 5$

$\underline{\quad} + 2 = 8$

$\underline{\quad} + 3 = 6$

$\underline{\quad} + 2 = 2$

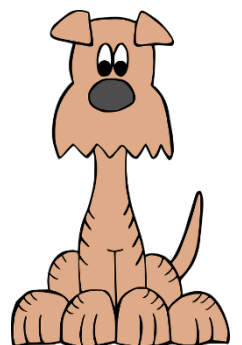
$\underline{\quad} - 5 = 4$

$\underline{\quad} + 2 = 7$

$\underline{\quad} + 3 = 7$

$\underline{\quad} + 2 = 3$

$\underline{\quad} - 4 = 4$



1. Denk an die Umkehraufgabe

$$\underline{\quad} \xrightarrow{+2} 5$$

$$\underline{\quad} - 1 = 7$$

$$\underline{\quad} + 3 = 9$$

$$\underline{\quad} \xrightarrow{-2} 4$$

$$\underline{\quad} \xrightarrow{+2} 8$$

$$\underline{\quad} - 5 = 3$$

$$\underline{\quad} + 1 = 9$$

$$\underline{\quad} \xrightarrow{-2} 8$$

$$\underline{\quad} - 3 = 5$$

$$\underline{\quad} + 6 = 9$$

$$\underline{\quad} \xrightarrow{+1} 7$$

$$\underline{\quad} - 7 = 1$$

$$\underline{\quad} + 5 = 9$$

$$\underline{\quad} \xrightarrow{-1} 6$$

$$\underline{\quad} + 0 = 9$$

2. Hier hilft dir Tausch- und Umkehraufgabe:



$$5 + \underline{\quad} = 8$$

$$7 + \underline{\quad} = 8$$

$$\underline{\quad} + \underline{\quad} \xrightarrow{\quad} 7$$

$$\underline{\quad} + 4 = 5$$

$$8 + \underline{\quad} = 8$$

$$3 + \underline{\quad} = 9$$

$$\underline{\quad} + \underline{\quad} \xrightarrow{\quad} 10$$

$$\underline{\quad} + 6 = 7$$

$$6 + \underline{\quad} = 8$$

$$2 + \underline{\quad} = 3$$

3. Ergänze !

$$6 + \underline{\quad} = 11$$

$$\underline{\quad} + 10 = 14$$

$$12 - \underline{\quad} = 6$$

$$\underline{\quad} - 4 = 7$$

$$8 + \underline{\quad} = 14$$

$$14 + 1 = \underline{\quad}$$

$$15 - \underline{\quad} = 9$$

$$\underline{\quad} - 9 = 11$$

4. Das kannst du!

$$1 + \underline{\quad} = 7$$

$$2 + \underline{\quad} = 3$$

$$2 + \underline{\quad} = 7$$

$$8 + \underline{\quad} = 8$$

$$4 + \underline{\quad} = 5$$

$$3 + \underline{\quad} = 10$$

$$4 + \underline{\quad} = 9$$

$$7 + \underline{\quad} = 9$$

$$6 + \underline{\quad} = 9$$

$$0 + \underline{\quad} = 6$$

$$9 + \underline{\quad} = 10$$

$$2 + \underline{\quad} = 4$$

$$6 - \underline{\quad} = 4$$

$$8 - \underline{\quad} = 2$$

$$4 - \underline{\quad} = 0$$

$$10 - \underline{\quad} = 1$$

$$5 - \underline{\quad} = 2$$

$$7 - \underline{\quad} = 5$$

$$9 - \underline{\quad} = 4$$

$$6 - \underline{\quad} = 3$$

$$8 - \underline{\quad} = 4$$

$$9 - \underline{\quad} = 5$$

$$7 - \underline{\quad} = 3$$

$$6 - \underline{\quad} = 5$$



1. Rechne

$6 + \underline{\quad} = 13$

$\underline{\quad} = 15 - 8$

$\underline{\quad} - 12 = 7$

$19 - \underline{\quad} = 5$

$\underline{\quad} = 8 + 7$

$\underline{\quad} + 3 = 17$

$5 + \underline{\quad} = 17$

$\underline{\quad} = 14 - 9$

$\underline{\quad} - 4 = 8$

$16 - \underline{\quad} = 7$

$\underline{\quad} = 9 + 9$

$\underline{\quad} + 6 = 12$

$5 + \underline{\quad} = 8$

$7 + \underline{\quad} = 9$

$4 + \underline{\quad} = 9$

$\underline{\quad} + 3 = 13$

$\underline{\quad} + 4 = 15$

$\underline{\quad} + 4 = 16$

$4 + \underline{\quad} = 6$

$5 + \underline{\quad} = 8$

$6 + \underline{\quad} = 8$

$\underline{\quad} + 3 = 16$

$\underline{\quad} + 3 = 18$

$\underline{\quad} + 5 = 19$

$11 - \underline{\quad} = 11$

$12 - \underline{\quad} = 11$

$16 - \underline{\quad} = 11$

$\underline{\quad} - 4 = 16$

$\underline{\quad} - 5 = 15$

$\underline{\quad} - 3 = 17$

$6 - \underline{\quad} = 2$

$7 - \underline{\quad} = 4$

$8 - \underline{\quad} = 4$

$\underline{\quad} - 4 = 6$

$\underline{\quad} - 6 = 4$

$\underline{\quad} - 8 = 2$

$13 + \underline{\quad} = 20$

$14 + \underline{\quad} = 16$

$15 + \underline{\quad} = 20$

$\underline{\quad} + 3 = 19$

$\underline{\quad} + 3 = 20$

$\underline{\quad} + 2 = 20$

$20 - \underline{\quad} = 15$

$20 - \underline{\quad} = 17$

$17 - \underline{\quad} = 15$

$\underline{\quad} - 4 = 10$

$\underline{\quad} - 2 = 11$

$\underline{\quad} - 3 = 15$

$16 + \underline{\quad} = 20$

$13 - \underline{\quad} = 10$

$18 + \underline{\quad} = 20$

$\underline{\quad} - 8 = 11$

$\underline{\quad} + 2 = 17$

$\underline{\quad} - 5 = 12$



2. Wie kommst du zu der Ergebniszahl?

Trage die fehlenden Zahlen in die Aufgaben ein!

$10 - \underline{\quad} = \underline{\quad}$

6

$13 - \underline{\quad} = \underline{\quad}$

11

$12 - \underline{\quad} = \underline{\quad}$

8

$15 - \underline{\quad} = \underline{\quad}$

$13 - \underline{\quad} = \underline{\quad}$

$9 + \underline{\quad} = \underline{\quad}$

$20 - \underline{\quad} = \underline{\quad}$

$11 - \underline{\quad} = \underline{\quad}$

$15 - \underline{\quad} = \underline{\quad}$

$\underline{\quad} + 3 = \underline{\quad}$

20

$\underline{\quad} - 3 = \underline{\quad}$

15

$\underline{\quad} - 3 = \underline{\quad}$

13

$\underline{\quad} + 12 = \underline{\quad}$

$\underline{\quad} + 9 = \underline{\quad}$

$\underline{\quad} + 8 = \underline{\quad}$

$\underline{\quad} + 6 = \underline{\quad}$

$\underline{\quad} + 7 = \underline{\quad}$

$\underline{\quad} + 5 = \underline{\quad}$

1. Finde die Tauschaufgabe und rechne!

$7 + 5 = 12$	$9 + 6 = 15$
$5 + 7 = 12$	$6 + 9 = 15$
$12 - 7 = 5$	$15 - 6 = 9$
$12 - 5 = 7$	$15 - 9 = 6$

2. Finde die richtige Tauschaufgabe und rechne!

$13 + 3 = 16$	$11 + 6 = 17$	$14 + 5 = 19$
$16 - 13 = 3$	$17 - 11 = 6$	$19 - 14 = 5$
$9 + 11 = 20$	$15 + 4 = 19$	$12 + 7 = 19$
$20 - 9 = 11$	$19 - 15 = 4$	$19 - 12 = 7$
$5 + 13 = 18$	$11 + 7 = 18$	$6 + 13 = 19$
$18 - 13 = 5$	$17 - 11 = 6$	$19 - 14 = 5$
$17 + 2 = 19$	$8 + 6 = 14$	$7 + 13 = 20$
$19 - 17 = 2$	$14 - 8 = 6$	$20 - 13 = 7$
$19 - 6 = 13$	$18 - 4 = 14$	$15 - 3 = 12$
$13 + 6 = 19$	$14 + 4 = 18$	$12 + 3 = 15$
$16 - 13 = 3$	$17 - 11 = 6$	$19 - 14 = 5$
$13 + 3 = 16$	$11 + 6 = 17$	$14 + 5 = 19$
$18 - 13 = 5$	$17 - 11 = 6$	$19 - 14 = 5$
$18 - 5 = 13$	$17 - 6 = 11$	$19 - 5 = 14$
$16 - 4 = 12$	$13 - 2 = 11$	$19 - 4 = 15$
$16 - 12 = 4$	$13 - 11 = 2$	$19 - 15 = 4$

1. Schreibe die verwandten Aufgaben auf und rechne!

Plusaufgabe	Minusaufgabe	Plusaufgabe	Minusaufgabe
$2 + 2 = 4$	$4 - 2 = 2$	$11 + 3 = 14$	$14 - 3 = 11$
$3 + 5 = 7$	$7 - 3 = 5$	$16 + 3 = 19$	$19 - 3 = 16$
$5 + 5 = 10$	$10 - 5 = 5$	$12 + 2 = 14$	$14 - 2 = 12$
$4 + 1 = 5$	$5 - 4 = 1$	$14 + 3 = 17$	$17 - 3 = 14$
$4 + 6 = 10$	$10 - 4 = 6$	$11 + 8 = 19$	$19 - 8 = 11$
$1 + 5 = 6$	$6 - 5 = 1$	$10 + 10 = 20$	$20 - 10 = 10$
$1 + 7 = 8$	$8 - 7 = 1$	$13 + 7 = 20$	$20 - 7 = 13$
Bzw. die jeweils andere Tauschaufgabe ...		Bzw. die jeweils andere Tauschaufgabe ...	

1. Platzhalter-Aufgaben

$$4 \text{ €} + \underline{6 \text{ €}} = 10 \text{ €}$$

$$6 \text{ €} + \underline{2 \text{ €}} = 8 \text{ €}$$

$$\underline{2 \text{ €}} + 5 \text{ €} = 7 \text{ €}$$

$$\underline{3 \text{ €}} + 6 \text{ €} = 9 \text{ €}$$

$$9 \text{ €} - \underline{2 \text{ €}} = 7 \text{ €}$$

$$10 \text{ €} - \underline{7 \text{ €}} = 3 \text{ €}$$

$$\underline{10 \text{ €}} - 3 \text{ €} = 7 \text{ €}$$

$$\underline{8 \text{ €}} - 7 \text{ €} = 1 \text{ €}$$

$$5 \text{ ct} + \underline{4 \text{ ct}} = 9 \text{ ct}$$

$$4 \text{ ct} + \underline{3 \text{ ct}} = 7 \text{ ct}$$

$$\underline{5 \text{ ct}} + 3 \text{ ct} = 8 \text{ ct}$$

$$\underline{8 \text{ ct}} + 2 \text{ ct} = 10 \text{ ct}$$

$$7 \text{ ct} - \underline{1 \text{ ct}} = 6 \text{ ct}$$

$$8 \text{ ct} - \underline{4 \text{ ct}} = 4 \text{ ct}$$

$$\underline{6 \text{ ct}} - 4 \text{ ct} = 2 \text{ ct}$$

$$\underline{9 \text{ ct}} - 2 \text{ ct} = 7 \text{ ct}$$

2. Hier hilft dir die Tauschaufgabe:

$$10 - \underline{1} = 9 \quad 9 - \underline{8} = 1 \quad 10 - \underline{8} = 2 \quad 10 \text{ -----} \rightarrow 6$$

$$10 - \underline{2} = 8 \quad 9 - \underline{7} = 2 \quad 10 - \underline{3} = 7$$

-7

$$10 - \underline{3} = 7 \quad 9 - \underline{6} = 3 \quad 10 - \underline{9} = 1 \quad 10 \text{ -----} \rightarrow 3$$

$$10 - \underline{4} = 6 \quad 9 - \underline{5} = 4 \quad 10 - \underline{10} = 0$$

-9

$$10 - \underline{5} = 5 \quad 9 - \underline{4} = 5 \quad 10 - \underline{6} = 4 \quad 10 \text{ -----} \rightarrow 1$$

3. Hier hilft dir die Umkehraufgabe:

$$\underline{8} + 1 = 9 \quad \underline{1} + 3 = 4 \quad \underline{2} + 1 = 3 \quad \underline{8} - 2 = 6$$

$$\underline{7} + 1 = 8 \quad \underline{2} + 3 = 5 \quad \underline{3} + 1 = 4 \quad \underline{8} - 3 = 5$$

$$\underline{6} + 2 = 8 \quad \underline{3} + 3 = 6 \quad \underline{0} + 2 = 2 \quad \underline{9} - 5 = 4$$

$$\underline{5} + 2 = 7 \quad \underline{4} + 3 = 7 \quad \underline{1} + 2 = 3 \quad \underline{8} - 4 = 4$$

Platzhalteraufgaben - Kannst du das?

Lösung 4

1. Denk an die Umkehraufgabe

$$\begin{array}{cccc} +2 & & & -2 \\ 3 \text{ -----} \rightarrow 5 & 8 - 1 = 7 & 6 + 3 = 9 & 6 \text{ -----} \rightarrow 4 \\ & 8 - 5 = 3 & 8 + 1 = 9 & \end{array}$$

$$\begin{array}{cccc} +2 & & & -2 \\ 6 \text{ -----} \rightarrow 8 & & 3 + 6 = 9 & 10 \text{ -----} \rightarrow 8 \\ & 8 - 3 = 5 & & \end{array}$$

$$\begin{array}{cccc} & & 4 + 5 = 9 & \\ & & & \end{array}$$

$$\begin{array}{cccc} +1 & 8 - 7 = 1 & & -1 \\ 6 \text{ -----} \rightarrow 7 & & 9 + 0 = 9 & 7 \text{ -----} \rightarrow 6 \end{array}$$

2. Hier hilft dir Tausch- und Umkehraufgabe:

$$\begin{array}{ccc} 5 + \underline{3} = 8 & 7 + \underline{1} = 8 & +1 \\ & & 6 \text{ -----} \rightarrow 7 \quad \underline{1} + 4 = 5 \end{array}$$

$$8 + \underline{0} = 8 \quad 3 + \underline{6} = 9$$

$$\begin{array}{ccc} & & +2 \\ 6 + \underline{2} = 8 & 2 + \underline{1} = 3 & 8 \text{ -----} \rightarrow 10 \quad \underline{1} + 6 = 7 \end{array}$$

3. Ergänze!

$$6 + \underline{5} = 11 \quad \underline{4} + 10 = 14 \quad 12 - \underline{6} = 6 \quad \underline{11} - 4 = 7$$

$$8 + \underline{6} = 14 \quad 14 + 1 = \underline{15} \quad 15 - \underline{6} = 9 \quad \underline{20} - 9 = 11$$

4. Das kannst du!

$1 + \underline{6} = 7$

$4 + \underline{1} = 5$

$6 + \underline{3} = 9$

$2 + \underline{1} = 3$

$3 + \underline{7} = 10$

$0 + \underline{6} = 6$

$2 + \underline{5} = 7$

$4 + \underline{5} = 9$

$9 + \underline{1} = 10$

$8 + \underline{0} = 8$

$7 + \underline{2} = 9$

$2 + \underline{2} = 4$

$6 - \underline{2} = 4$

$5 - \underline{3} = 2$

$8 - \underline{4} = 4$

$8 - \underline{6} = 2$

$7 - \underline{2} = 5$

$9 - \underline{4} = 5$

$4 - \underline{4} = 0$

$9 - \underline{5} = 4$

$7 - \underline{4} = 3$

$10 - \underline{9} = 1$

$6 - \underline{3} = 3$

$6 - \underline{1} = 5$

Platzhalteraufgaben - Kannst du das?

Lösung 5

1. Rechne

$6 + 7 = 13$

$19 - 14 = 5$

$5 + 12 = 17$

$16 - 9 = 7$

$5 + 3 = 8$

$10 + 3 = 13$

$4 + 2 = 6$

$13 + 3 = 16$

$11 - 0 = 11$

$20 - 4 = 16$

$6 - 4 = 2$

$10 - 4 = 6$

$13 + 7 = 20$

$16 + 3 = 19$

$20 - 5 = 15$

$14 - 4 = 10$

$16 + 6 = 20$

$19 - 8 = 11$

$7 = 15 - 8$

$15 = 8 + 7$

$5 = 14 - 9$

$18 = 9 + 9$

$7 + 2 = 9$

$11 + 4 = 15$

$5 + 3 = 8$

$15 + 3 = 18$

$12 - 1 = 11$

$20 - 5 = 15$

$7 - 3 = 4$

$10 - 6 = 4$

$14 + 2 = 16$

$17 + 3 = 20$

$20 - 3 = 17$

$13 - 2 = 11$

$13 - 3 = 10$

$15 + 2 = 17$

$19 - 12 = 7$

$14 + 3 = 17$

$12 - 4 = 8$

$6 + 6 = 12$

$4 + 5 = 9$

$12 + 4 = 16$

$6 + 2 = 8$

$14 + 5 = 19$

$16 - 5 = 11$

$20 - 3 = 17$

$8 - 4 = 4$

$10 - 8 = 2$

$15 + 5 = 20$

$18 + 2 = 20$

$17 - 2 = 15$

$18 - 3 = 15$

$18 + 2 = 20$

$17 - 5 = 12$

2. Wie kommst du zu der Ergebniszahl?

Trage die fehlenden Zahlen in die Aufgaben ein!

$10 - 4 = 6$

$15 - 9 = 6$

$13 - 7 = 6$

$13 - 2 = 11$

$9 + 3 = 11$

$20 - 9 = 11$

$12 - 4 = 8$

$11 - 3 = 8$

$15 - 7 = 8$

$17 + 3 = 20$

$8 + 12 = 20$

$11 + 9 = 20$

$18 - 3 = 15$

$7 + 8 = 15$

$9 + 6 = 15$

$16 - 3 = 13$

$6 + 7 = 13$

$8 + 5 = 13$