

1. Rechne genau!

34	+	8	=	
48	+	7	=	

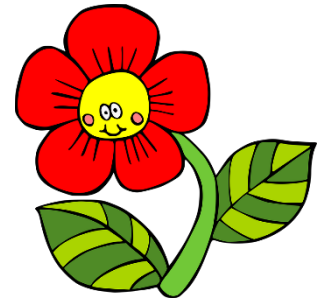
8	+	43	=	
5	+	68	=	

37	+		=	44
48	+		=	53

2. Fülle die Lücken!

63	-	9	=	
23	-	8	=	
42	-	7	=	

31	-		=	25
72	-		=	64
37	-		=	28



3. Rechne!

28	+	55	=	
57	+	15	=	

64	+	27	=	
37	+	36	=	

64	-	17	=	
71	-	23	=	

4. Platzhalteraufgaben!

67	+		=	75
58	+		=	65

64	-		=	47
57	-		=	39

	-	19	=	54
	-	43	=	89

5. Kannst du diese Ketten rechnen?

31	+	7	+	9	=	
33	+	31	+	5	=	

36	-	7	-	2	=	
79	-	43	-	4	=	

6. Rechne! Denke auch an Rechenvorteile!

64	+	35	=	
26	+	44	=	
98	-	66	=	
39	-	27	=	

56	+	16	=	
57	+	29	=	
82	-	44	=	
64	-	55	=	

26	+	19	=	
46	+	46	=	
63	-	38	=	
83	-	29	=	

1.

$15 + \underline{\quad} = 30$

$25 + \underline{\quad} = 29$

$12 + \underline{\quad} = 29$

$20 + \underline{\quad} = 28$

$14 + \underline{\quad} = 19$

$13 + \underline{\quad} = 20$

$15 + \underline{\quad} = 25$

$22 + \underline{\quad} = 27$

$11 + \underline{\quad} = 14$

$19 + \underline{\quad} = 30$

$20 + \underline{\quad} = 24$

$16 + \underline{\quad} = 22$

$16 + \underline{\quad} = 29$

$17 + \underline{\quad} = 21$

$21 + \underline{\quad} = 29$

$22 + \underline{\quad} = 29$

$13 + \underline{\quad} = 25$

$23 + \underline{\quad} = 27$

$23 + \underline{\quad} = 23$

$22 + \underline{\quad} = 26$

2.

$13 + \underline{\quad} = 29$

$15 + \underline{\quad} = 26$

$23 + \underline{\quad} = 29$

$21 + \underline{\quad} = 28$

$15 + \underline{\quad} = 15$

$17 + \underline{\quad} = 29$

$26 + \underline{\quad} = 25$

$24 + \underline{\quad} = 26$

$17 + \underline{\quad} = 25$

$19 + \underline{\quad} = 30$

$27 + \underline{\quad} = 27$

$23 + \underline{\quad} = 30$

$19 + \underline{\quad} = 29$

$16 + \underline{\quad} = 25$

$21 + \underline{\quad} = 28$

$29 + \underline{\quad} = 29$

$11 + \underline{\quad} = 19$

$12 + \underline{\quad} = 24$

$20 + \underline{\quad} = 22$

$22 + \underline{\quad} = 27$

3.

$30 - \underline{\quad} = 23$

$19 - \underline{\quad} = 5$

$23 - \underline{\quad} = 15$

$26 - \underline{\quad} = 13$

$25 - \underline{\quad} = 17$

$23 - \underline{\quad} = 13$

$16 - \underline{\quad} = 14$

$24 - \underline{\quad} = 21$

$17 - \underline{\quad} = 9$

$25 - \underline{\quad} = 12$

$26 - \underline{\quad} = 12$

$18 - \underline{\quad} = 12$

$23 - \underline{\quad} = 7$

$13 - \underline{\quad} = 10$

$16 - \underline{\quad} = 16$

$15 - \underline{\quad} = 11$

$12 - \underline{\quad} = 5$

$10 - \underline{\quad} = 6$

$29 - \underline{\quad} = 19$

$25 - \underline{\quad} = 9$



4.

$25 - \underline{\quad} = 22$

$28 - \underline{\quad} = 15$

$29 - \underline{\quad} = 20$

$20 - \underline{\quad} = 15$

$30 - \underline{\quad} = 21$

$25 - \underline{\quad} = 11$

$27 - \underline{\quad} = 22$

$25 - \underline{\quad} = 12$

$29 - \underline{\quad} = 26$

$22 - \underline{\quad} = 13$

$20 - \underline{\quad} = 12$

$21 - \underline{\quad} = 16$

$16 - \underline{\quad} = 13$

$19 - \underline{\quad} = 12$

$23 - \underline{\quad} = 18$

$23 - \underline{\quad} = 14$

$23 - \underline{\quad} = 17$

$20 - \underline{\quad} = 16$

$25 - \underline{\quad} = 13$

$24 - \underline{\quad} = 19$

5.

$19 - \underline{\quad} = 10$

$26 - \underline{\quad} = 10$

$30 - \underline{\quad} = 20$

$18 - \underline{\quad} = 13$

$16 - \underline{\quad} = 10$

$23 - \underline{\quad} = 12$

$29 - \underline{\quad} = 22$

$16 - \underline{\quad} = 11$

$21 - \underline{\quad} = 11$

$29 - \underline{\quad} = 15$

$28 - \underline{\quad} = 24$

$14 - \underline{\quad} = 9$

$18 - \underline{\quad} = 12$

$24 - \underline{\quad} = 9$

$27 - \underline{\quad} = 26$

$12 - \underline{\quad} = 4$

$15 - \underline{\quad} = 11$

$30 - \underline{\quad} = 14$

$26 - \underline{\quad} = 22$

$17 - \underline{\quad} = 5$

1. Vergleiche! Setze das richtige Zeichen ein: < > = ?

$39 - 20 + 6$		$58 - 30$
$52 + 30 - 8$		$26 + 50$

$26 + 7 - 9$		$64 - 40$
$33 - 8 + 4$		$82 - 50$

2. Löse die Aufgaben!

37		45
83		33

28		88
72		84

55		47
65		53

3. Rechne!

$50 + 19 = \underline{\quad}$

$82 - 18 = \underline{\quad}$

$82 - 34 = \underline{\quad}$

$75 + 18 = \underline{\quad}$

$53 - 35 = \underline{\quad}$

$\underline{\quad} - 21 = 22$

$41 + 29 = \underline{\quad}$

$85 - 28 = \underline{\quad}$

$73 - 16 = \underline{\quad}$

$46 + 48 = \underline{\quad}$

$70 - 16 = \underline{\quad}$

$\underline{\quad} - 13 = 19$

$36 + 39 = \underline{\quad}$

$54 - 38 = \underline{\quad}$

$71 - \underline{\quad} = 19$

4. Ergänze oder vermindere:

24	+		=	58
98	-		=	33

56	+		=	80
82	-		=	44

26	+		=	75
63	-		=	8



1. Fülle die Lücken!

38	+	15	=	
38	+	27	=	
38	+	43	=	

	+	15	=	53
	+	15	=	56
	+	15	=	63

38	+		=	81
38	+		=	84
38	+		=	91

45	+		=	89
45	+		=	83
45	+		=	86

94	-	26	=	
53	-	26	=	
69	-	26	=	

	-	26	=	68
	-	26	=	27
	-	26	=	43

94	-		=	44
53	-		=	3
69	-		=	19

98	-		=	75
63	-		=	40
79	-		=	56

2. Kettenrechnungen!

18	+	12	+		+	35	=	68
69	-	15	-	21	-		=	23
33	+		+	48	+	9	=	91
99	-	34	-	12	-		=	23
13	+	38	+		+	9	=	68
96	-	48	-	19	-		=	13
15	+	36	+		+	10	=	86
68	-		-	11	-	8	=	13
15	+	13	+		+	11	=	99
	-	16	-	23	-	11	=	49
69	-	24	+	3	-	16	=	
16	+	14	+	39	-	19	=	
	+	23	+	15	+	9	=	77
	-	16	+	18	-	30	=	32
	+	18	-	20	-	28	=	41

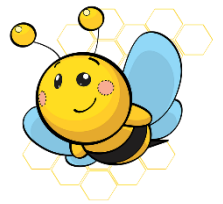


1. Rechne!

35	+	9	=	
66	+	7	=	
79	+	7	=	

83	-	9	=	
92	-	8	=	
45	-	6	=	

32	+	9	=	
71	-	7	=	
53	-	6	=	



73	+		=	82
36	+		=	41
22	+		=	33

54	-		=	45
21	-		=	14
62	-		=	56

94	-		=	87
76	+		=	85
93	-		=	88

2. Kannst du auch diese Aufgaben lösen?

	+	8	=	33
	-	6	=	88

	-	8	=	47
	+	6	=	91

35	=	27	+	
77	=	86	-	

3. Zahlenrätsel

a) Meine Zahl ist um 8 größer als 66.

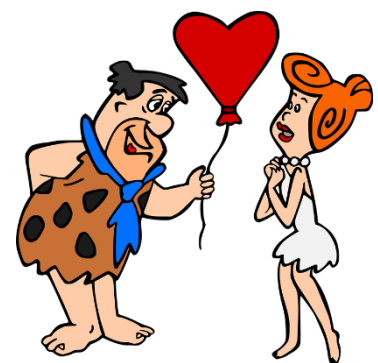
_____ Die Zahl heißt _____

a) Halbiere 60 und nimm dann 8 weg

_____ Die Zahl heißt _____

b) Verdopple 40 und füge dann 9 hinzu.

_____ Die Zahl heißt _____



c) Wenn ich zu meiner Zahl 8 hinzuzähle habe ich das Doppelte von 50.

_____ Die Zahl heißt _____

1. Rechne!

42	-	26	=	
66	-	49	=	

47	+		=	73
	-	26	=	64

24	+		=	52
	-	42	=	29

2. Sicher schaffst du auch diese Aufgaben!

55	+	8	=	
81	-	4	=	

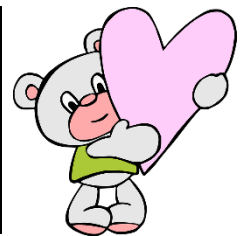
79	+	6	=	
42	-	9	=	

86	+	7	=	
63	-	6	=	

3. Löse die Platzhalteraufgaben!

16	+		=	21
88	+		=	96
74	+		=	81

62	-		=	58
41	-		=	35
93	-		=	84



4. Rechne!

7	+	4	=	
27	+	24	=	
47	+	44	=	
48	+	43	=	

8	+	5	=	
18	+	25	=	
38	+	15	=	
40	+	15	=	

63	-	30	=	
52	-	40	=	
71	-	4	=	
96	-	36	=	

5. Verdopple!

40	+	40	=	
35	+	35	=	
30	+	30	=	

21	+	21	=	
22	+	22	=	
23	+	23	=	



6. Halbiere

80	=	40	+	40
82	=		+	
84	=		+	

64	=		+	
74	=		+	
94	=		+	

2. Klasse Mathe +/- im Zahlenraum bis 100 mit Zehnerübergang Lösung Bl. 1

1. Rechne genau!

34	+	8	=	42
48	+	7	=	55

8	+	43	=	51
5	+	68	=	73

37	+	7	=	44
48	+	5	=	53

2. Fülle die Lücken!

63	-	9	=	54
23	-	8	=	15
42	-	7	=	35

31	-	6	=	25
72	-	8	=	64
37	-	9	=	28

3. Rechne!

28	+	55	=	83
57	+	15	=	72

64	+	27	=	91
37	+	36	=	73

64	-	17	=	47
71	-	23	=	48

4. Platzhalteraufgaben!

67	+	8	=	75
58	+	7	=	65

64	-	17	=	47
57	-	18	=	39

73	-	19	=	54
132	-	43	=	89

5. Kannst du diese Ketten rechnen?

31	+	7	+	9	=	47
33	+	31	+	5	=	69

36	-	7	-	2	=	27
79	-	43	-	4	=	32

6. Rechne! Denke auch an Rechenvorteile!

64	+	35	=	99
26	+	44	=	70
98	-	66	=	32
39	-	27	=	12

56	+	16	=	72
57	+	29	=	86
82	-	44	=	38
64	-	55	=	9

26	+	19	=	45
46	+	46	=	92
63	-	38	=	25
83	-	29	=	54

2. Klasse Mathe +/- im Zahlenraum bis 100 mit Zehnerübergang Lösung Bl. 2

1.)

15 + <u>15</u> = 30	25 + <u>4</u> = 29	12 + <u>17</u> = 29	20 + <u>8</u> = 28
14 + <u>5</u> = 19	13 + <u>7</u> = 20	15 + <u>10</u> = 25	22 + <u>5</u> = 27
11 + <u>3</u> = 14	19 + <u>11</u> = 30	20 + <u>4</u> = 24	16 + <u>6</u> = 22
16 + <u>13</u> = 29	17 + <u>4</u> = 21	21 + <u>8</u> = 29	22 + <u>7</u> = 29
13 + <u>12</u> = 25	23 + <u>4</u> = 27	23 + <u>0</u> = 23	22 + <u>4</u> = 26

2.)

13 + <u>16</u> = 29	15 + <u>11</u> = 26	23 + <u>6</u> = 29	21 + <u>7</u> = 28
15 + <u>15</u> = 30	17 + <u>12</u> = 29	26 + <u>1</u> = 25	24 + <u>2</u> = 26
17 + <u>8</u> = 25	19 + <u>11</u> = 30	27 + <u>0</u> = 27	23 + <u>7</u> = 30
19 + <u>10</u> = 29	16 + <u>9</u> = 25	21 + <u>7</u> = 28	29 + <u>0</u> = 29
11 + <u>8</u> = 19	12 + <u>12</u> = 24	20 + <u>2</u> = 22	22 + <u>5</u> = 27

3.)

$30 - \underline{7} = 23$	$19 - \underline{14} = 5$	$23 - \underline{8} = 15$	$26 - \underline{13} = 13$
$25 - \underline{8} = 17$	$23 - \underline{10} = 13$	$16 - \underline{2} = 14$	$24 - \underline{3} = 21$
$17 - \underline{8} = 9$	$25 - \underline{13} = 12$	$26 - \underline{14} = 12$	$18 - \underline{6} = 12$
$23 - \underline{16} = 7$	$13 - \underline{3} = 10$	$16 - \underline{0} = 16$	$15 - \underline{4} = 11$
$12 - \underline{7} = 5$	$10 - \underline{4} = 6$	$29 - \underline{10} = 19$	$25 - \underline{16} = 9$

4.)

$25 - \underline{3} = 22$	$28 - \underline{13} = 15$	$29 - \underline{9} = 20$	$20 - \underline{5} = 15$
$30 - \underline{9} = 21$	$25 - \underline{14} = 11$	$27 - \underline{5} = 22$	$25 - \underline{13} = 12$
$29 - \underline{3} = 26$	$22 - \underline{9} = 13$	$20 - \underline{8} = 12$	$21 - \underline{5} = 16$
$16 - \underline{3} = 13$	$19 - \underline{7} = 12$	$23 - \underline{5} = 18$	$23 - \underline{9} = 14$
$23 - \underline{6} = 17$	$20 - \underline{4} = 16$	$25 - \underline{12} = 13$	$24 - \underline{5} = 19$

5.)

$19 - \underline{9} = 10$	$26 - \underline{16} = 10$	$30 - \underline{10} = 20$	$18 - \underline{5} = 13$
$16 - \underline{6} = 10$	$23 - \underline{11} = 12$	$29 - \underline{7} = 22$	$16 - \underline{5} = 11$
$21 - \underline{10} = 11$	$29 - \underline{14} = 15$	$28 - \underline{4} = 24$	$14 - \underline{5} = 9$
$18 - \underline{6} = 12$	$24 - \underline{15} = 9$	$27 - \underline{1} = 26$	$12 - \underline{8} = 4$
$15 - \underline{4} = 11$	$30 - \underline{16} = 14$	$26 - \underline{4} = 22$	$17 - \underline{12} = 5$

2. Klasse Mathe +/- im Zahlenraum bis 100 mit Zehnerübergang Lösung Bl. 3

1. Vergleiche! Setze das richtige Zeichen ein: < > =

$39 - 20 + 6$	<	$58 - 30$
$52 + 30 - 8$	=	$26 + 50$

$26 + 7 - 9$	<	$64 - 40$
$33 - 8 + 4$	<	$82 - 50$

2. Löse die Aufgaben!

37	+ 8 =	45
83	- 50 =	33

28	+ 60 =	88
72	+ 12 =	84

55	- 8 =	47
65	- 12 =	53

3. Rechne!

$50 + 19 = 69$	$82 - 18 = 64$	$82 - 34 = 48$
$75 + 18 = 93$	$53 - 35 = 18$	$43 - 21 = 22$
$41 + 29 = 70$	$85 - 28 = 57$	$73 - 16 = 57$
$46 + 48 = 94$	$70 - 16 = 54$	$32 - 13 = 19$
$36 + 39 = 75$	$54 - 38 = 16$	$71 - 52 = 19$

4. Ergänze oder vermindere:

24	+ 34	=	58
98	- 65	=	33

56	+ 24	=	80
82	- 38	=	44

26	+ 49	=	75
63	- 55	=	8

2. Klasse Mathe +/- im Zahlenraum bis 100 mit Zehnerübergang Lösung Bl. 4

1. Fülle die Lücken!

38	+ 15	=	53
38	+ 27	=	65
38	+ 43	=	81

38	+ 15	=	53
41	+ 15	=	56
48	+ 15	=	63

38	+ 43	=	81
38	+ 46	=	84
38	+ 53	=	91

45	+ 44	=	89
45	+ 38	=	83
45	+ 41	=	86

94	-	26	=	68
53	-	26	=	27
69	-	26	=	43

94	-	26	=	68
53	-	26	=	27
69	-	26	=	43

94	-	50	=	44
53	-	45	=	3
69	-	49	=	19

98	-	23	=	75
63	-	18	=	40
79	-	33	=	56

2. Kettenrechnungen!

18	+	12	+	3	+	35	=	68
69	-	15	-	21	-	10	=	23
33	+	1	+	48	+	9	=	91
99	-	34	-	12	-	30	=	23
13	+	38	+	8	+	9	=	68
96	-	48	-	19	-	16	=	13
15	+	36	+	25	+	10	=	86
68	-	36	-	11	-	8	=	13
15	+	13	+	60	+	11	=	99

99	-	16	-	23	-	11	=	49
69	-	24	+	3	-	16	=	32
16	+	14	+	39	-	19	=	50
30	+	23	+	15	+	9	=	77
60	-	16	+	18	-	30	=	32
71	+	18	-	20	-	28	=	41

2. Klasse Mathe +/- im Zahlenraum bis 100 mit Zehnerübergang Lösung Bl. 5

1. Rechne!

35	+	9	=	44
66	+	7	=	73
79	+	7	=	86

83	-	9	=	74
92	-	8	=	84
45	-	6	=	39

32	+	9	=	41
71	-	7	=	64
53	-	6	=	47

73	+	9	=	82
36	+	5	=	41
22	+	11	=	33

54	-	9	=	45
21	-	7	=	14
62	-	6	=	56

94	-	7	=	87
76	+	9	=	85
93	-	5	=	88

2. Kannst du auch diese Aufgaben lösen?

25	+	8	=	33
94	-	6	=	88

55	-	8	=	47
85	+	6	=	91

35	=	27	+	8
77	=	86	-	9

3. Zahlenrätsel

- a) Meine Zahl ist um 8 größer als 66. $66 + 8 = 74$ Die Zahl heißt **74**
 b) Halbiere 60 und nimm dann 8 weg $60 - 30 - 8 = 22$ Die Zahl heißt **22**
 c) Verdopple 40 und füge dann 9 hinzu. $40 + 40 + 9 = 89$ Die Zahl heißt **89**
 d) Wenn ich zu meiner Zahl 8 hinzuzähle habe ich das Doppelte von 50.
 $50 + 50 - 8 = 92$ Die Zahl heißt **92**

2. Klasse Mathe +/- im Zahlenraum bis 100 mit Zehnerübergang Lösung Bl. 6

1. Rechne!

42	-	26	=	16
66	-	49	=	17

47	+	26	=	73
90	-	26	=	64

24	+	28	=	52
71	-	42	=	29

2. Sicher schaffst du auch diese Aufgaben!

55	+	8	=	63
81	-	4	=	77

79	+	6	=	85
42	-	9	=	33

86	+	7	=	93
63	-	6	=	57

3. Löse die Platzhalteraufgaben!

16	+	5	=	21
88	+	8	=	96
74	+	7	=	81

62	-	4	=	58
41	-	6	=	35
93	-	9	=	84

4. Rechne!

7	+	4	=	11
27	+	24	=	51
47	+	44	=	91
48	+	43	=	91

8	+	5	=	13
18	+	25	=	43
38	+	15	=	53
40	+	15	=	55

63	-	30	=	33
52	-	40	=	12
71	-	4	=	67
96	-	36	=	60

5. Verdopple!

40	+	40	=	80
35	+	35	=	70
30	+	30	=	60

21	+	21	=	42
22	+	22	=	44
23	+	23	=	46

6. Halbiere

80	=	40	+	40
82	=	41	+	41
84	=	42	+	42

64	=	32	+	32
74	=	36	+	36
94	=	47	+	47